

HP Display Assistant

User Guide



© Copyright 2007 Hewlett-Packard Development Company, L.P. The information contained herein is subject to change without notice.

Microsoft, Windows, and Windows Vista are either trademarks or registered trademarks of Microsoft Corporation in the United States and/or other countries.

The only warranties for HP products and services are set forth in the express warranty statements accompanying such products and services. Nothing herein should be construed as constituting an additional warranty. HP shall not be liable for technical or editorial errors or omissions contained herein.

This document contains proprietary information that is protected by copyright. No part of this document may be photocopied, reproduced, or translated to another language without the prior written consent of Hewlett-Packard Company.

User Guide

HP Display Assistant

Second Edition (November 2007)

Document Part Number: 433135-002

Table of contents

1 Overview

What is HP Display Assistant?	1
Installing HP Display Assistant	1
Uninstalling HP Display Assistant	2
Opening HP Display Assistant	2
Wizard and OSD Modes	2
Common Controls	3

2 OSD Mode

Adjust Tab	4
Adjusting the Settings	4

3 Wizard Mode

Wizard Tab	6
Wizard Mode Adjustment Sequence	6

4 Options

Options Tab	8
-------------------	---

5 Presets

File Tab	10
Customized and Factory Default Presets	10
Creating Presets	11
Modifying Presets	11
Loading Presets	11
Deleting Presets	11

6 Plug-Ins

Plug-ins Tab	12
Asset Management	12
Color Calibration	13
Using HP Display Assistant Color Calibration	13
Calibrated Target	14
Uncalibrated Target	15
Theft Deterrence	16

7 Tips & Troubleshooting

HP Display and Graphics Card Compatibility	18
HP Display Assistant Software Update	18
Asset Management (Select HP Display Models Only)	19
Cautions for Theft Deterrence Function Operation (Select HP Display Models Only)	19
If HP Display Assistant Is Not Working	19
Laptop Users	20
Technical Support	20

1 Overview

What is HP Display Assistant?

Monitor performance can vary due to the graphics cards, host computers, lighting conditions, and other environmental factors. To get the best image on a monitor, you must adjust it for your unique setting. Using the manual controls to adjust the image can often be challenging. In most cases, even simple adjustments to brightness or contrast require navigation of the multi-level, on-screen display (OSD) menus that can be difficult to understand. Furthermore, there is no feedback to help you correctly adjust the monitor settings.

HP Display Assistant is a software utility that allows you to quickly and accurately adjust the display settings and save the configurations that are best suited for you and your environment. The utility guides you through the monitor adjustment process with easy-to-understand instructions and background patterns designed for each adjustment so that you can obtain the best overall picture quality. You can save multiple display settings to files called “presets” that can be quickly loaded for multiple users or a single user working under various environmental conditions.

HP Display Assistant allows for monitor adjustment and color tuning using the Display Data Channel Command Interface (DDC/CI) protocol. All adjustments to the display are controlled by software, eliminating the need to use the monitor on-screen display (OSD) manual controls.

HP Display Assistant supports Microsoft Windows 98SE, Me, 2000, Windows NT, XP Home, XP Professional, and Vista.

Installing HP Display Assistant

1. Insert the *Software and Documentation* CD included with your monitor into a CD or DVD drive on your computer. The CD will automatically run and display the HP Monitors Software and Documentation window.
2. Select a language from the drop-down list and click the >> button.
3. Click **Install HP Display Assistant Utility**.
4. Select a language from the drop-down list and click the **OK** button.
5. Follow the instructions in the InstallShield Wizard to complete the installation.

Uninstalling HP Display Assistant

HP Display Assistant can be uninstalled from either **Add/Remove Programs** or the **Start** menu.

Follow the steps below to uninstall HP Display Assistant from **Add/Remove Programs**:

1. From the **Start** menu, select **Settings**, then select **Control Panel**. (For Windows XP, select **Control Panel** from the **Start** menu).
2. In the **Control Panel**, click the **Add/Remove Programs** icon.
3. From the **Add/Remove Programs** window, click **HP Display Assistant** to highlight it.
4. Click the **Remove** button to uninstall the program.
5. Click the **Yes** button to begin uninstalling HP Display Assistant.
6. Wait until Windows shows the dialog box to confirm a successful uninstall.
7. Once the uninstall is complete, you will be prompted to restart your system.
8. Click the **Yes** button to complete the uninstall.

Follow the steps below to uninstall HP Display Assistant from the **Start** menu:

1. From the **Start** menu, select **All Programs > HP Display Assistant > Uninstall HP Display Assistant**.
2. Click the **Yes** button to begin uninstalling HP Display Assistant.
3. Once the uninstall is complete, you will be prompted to restart your system.
4. Click the **Yes** button to complete the uninstall.

Opening HP Display Assistant

HP Display Assistant runs in the background and can be accessed through any of the following methods.

- Click the HP Display Assistant icon in the task tray. (This method can be turned on or off in the **Options** tab.)
- Right-click on the desktop and select **Tune Display**. (This method can be turned on or off in the **Options** tab.)
- Double-click the HP Display Assistant shortcut icon on the desktop.
- From the **Start** menu, select **All Programs > HP Display Assistant > HP Display Assistant**.

Wizard and OSD Modes

HP Display Assistant has two modes of operation: Wizard mode and OSD mode.

The recommended mode of operation is Wizard mode, which takes you through a step-by-step process to accurately calibrate all the monitor settings.

OSD mode allows you to make changes to any single monitor setting without the need to go through a predefined sequence of steps for all settings. This method is less accurate than Wizard mode, but allows you to quickly adjust any monitor setting.

Common Controls

The following are common controls used to adjust many of the monitor settings.

?: Opens the online help file in the default browser window.

X: Closes HP Display Assistant.

+/-: Increases or decreases the monitor value by one unit for the current adjustment pane.

Slider: Increases or decreases the monitor value for the current adjustment pane.

Pattern: Displays the adjustment image used to tune the display in OSD mode. To close the adjustment image, click the **Pattern** button again.

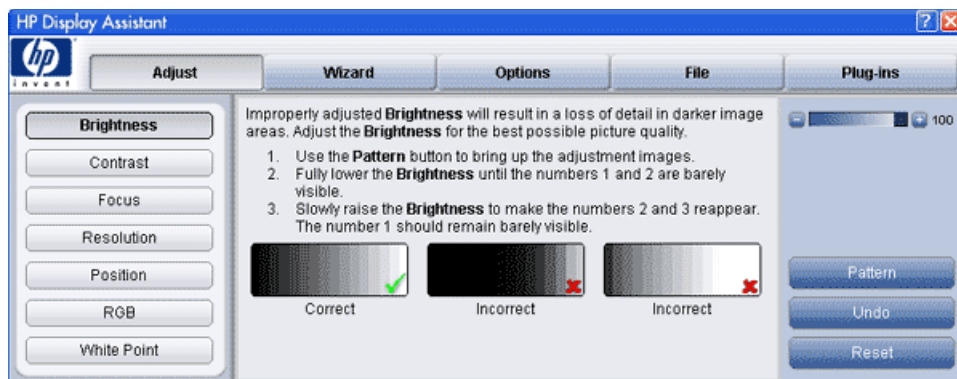
Undo: Restores the monitor value for the active adjustment pane to its previous setting.

Reset: Restores the monitor value for the active adjustment pane to its factory setting.

2 OSD Mode

Adjust Tab

OSD mode provides quick access to adjust any of the of the monitor settings. The adjustment controls for OSD mode are located on the **Adjust** tab. Each button on the left side of the tab opens an adjustment pane for that setting. The center section of the tab provides instructions for adjusting the selected setting. The right side of the tab provides adjustment controls.



Adjusting the Settings


Click on a settings button on the left side of the tab to open the adjustment pane for that setting.

Brightness: Opens the Brightness adjustment pane. Click the **Pattern** button to load the adjustment image then use the slider or the +/- buttons to adjust the brightness.

Contrast: Opens the Contrast adjustment pane. Click the **Pattern** button to load the adjustment image then use the slider or the +/- buttons to adjust the contrast.

Focus: (This settings button is not available if you are using the digital connection of your graphics card and monitor.) Opens the Focus adjustment pane. Click the **Pattern** button to load the adjustment image, then click the **Auto Setup** button to use the manufacturer's recommended settings. If there still appears to be movement in the patterns, use the **Pitch** slider to reduce any noise on the screen. Then use the **Phase** slider to completely eliminate residual noise.


Resolution: Opens the Resolution adjustment pane. Click the **Preferred** button to set the display to the manufacturer's recommended settings. If your display is any resolution other than the preferred setting, the clarity of fonts and graphics will be compromised.

 **NOTE:** The Color Calibration feature requires the display to be set to the preferred resolution.

Position: (This settings button is not available if you are using the digital connection of your graphics card and monitor.) Opens the Position adjustment pane. Click the **Pattern** button to load the adjustment image then click the control buttons on the monitor graphic above the **Pattern** button to position the grid so that all edges are visible.

RGB: Opens the RGB color adjustment pane. Click the **Pattern** button to load the adjustment image, then use the red, green, and blue color sliders to increase or decrease the corresponding primary colors. The top three sliders control RGB gain (the amount of white in the color), and the bottom three sliders control black level (the amount of black in the color).

White Point: Opens the White Point adjustment pane. The display is capable of white points for sRGB, 6500, and 9300. Click the **Auto Color** button to automatically set the color adjustments to the optimal setting. You can also click the **Pattern** button to load the adjustment image then click the white point value buttons above the slider to find the white point value that matches a piece of white paper.

 **NOTE:** After making adjustments to the settings, you can save your settings as a preset. On the **File** tab, highlight the name in the **Enter Preset name** box, enter a new name, then click the **Save** button to save the preset. For more information, refer to the [Presets on page 10](#) section.

3 Wizard Mode

Wizard Tab

Wizard mode guides you through a predefined step-by-step process with instructions and patterns for adjusting each monitor setting. Select the **Wizard** tab to make adjustments in Wizard mode.



To run the Wizard, click the **Start Wizard** button and follow the instructions in the Wizard to adjust the display settings.

Wizard Mode Adjustment Sequence

The Wizard will guide you through the adjustments in the following sequence. Click the right arrow button on the bottom right corner of the Wizard to advance to the next window in the adjustment sequence.

Resolution: Opens the Resolution adjustment pane. Click the **Preferred** button to set the display to the manufacturer's recommended settings. If your display is in any resolution other than the preferred setting, the clarity of fonts and graphics will be compromised.

 **NOTE:** The Color Calibration feature requires the display to be set to the preferred resolution.


Focus: (This adjustment is not available if you are using the digital connection of your graphics card and monitor.) Opens the Focus adjustment pane. Click the **Auto Setup** button to use the manufacturer recommended settings. If there still appears to be movement in the patterns, use the **Pitch** slider to reduce any noise on the screen. Then use the **Phase** slider to completely eliminate residual noise.

Brightness: Opens the Brightness adjustment pane. Use the slider or the **+/-** buttons to adjust the brightness.

Contrast: Opens the Contrast adjustment pane. Use the slider or the **+/-** buttons to adjust the contrast.

Position: (This adjustment is not available if you are using the digital connection of your graphics card and monitor.) Opens the Position adjustment pane. Click the control buttons on the monitor graphic to position the grid so that all edges are visible.

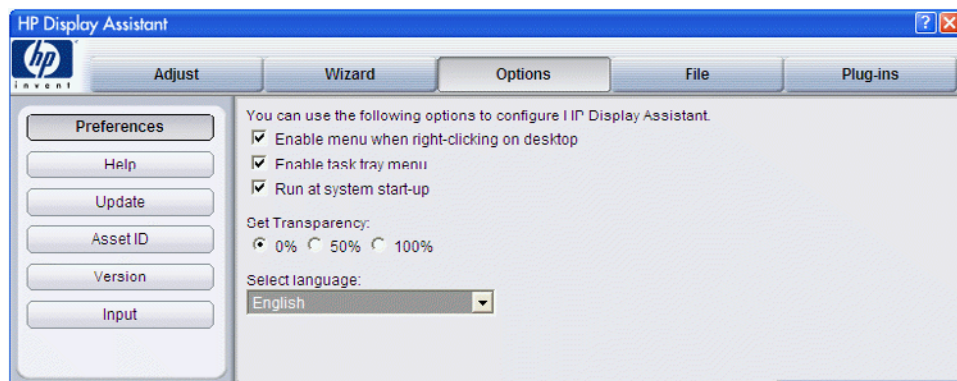
White Point: Opens the White Point adjustment pane. Click the **Reset** button then select a white point value (**sRGB**, **6500**, or **9300**). Use a white point value that makes the display match a piece of white paper.

 **NOTE:** Once the adjustment process is complete, The **File** tab will be displayed where you can save the settings as a preset. Highlight the name in the **Enter Preset name** box, enter a new name, then click the **Save** button to save the preset. For more information, refer to the [Presets on page 10](#) section.

4 Options

Options Tab

The **Options** tab includes preference settings, online help, signal inputs, and a link to software updates.



Click on a button on the left side of the tab to open the pane for that option.

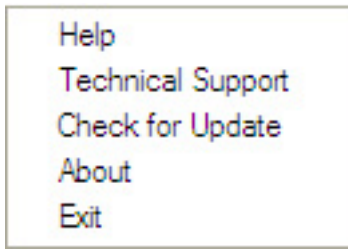
Preferences: Opens the Preferences pane. To turn on or off any preference, click the check box next to the preference to add a check mark or clear the check mark. You can select the following preferences:

- **Enable menu when right-clicking on desktop:** Puts HP Display Assistant options at the bottom of the desktop's right-click context sensitive menu.



To access the HP Display Assistant context sensitive menu, right-click on any vacant area of the desktop and select one of the following:

- ☐ **HP Display Assistant:** Shows the version number of HP Display Assistant.
- ☐ **Select Preset:** Provides a list of predefined presets for immediate use.
- ☐ **Tune Display:** Opens the HP Display Assistant control panel.
- **Enable task tray menu:** Shows a complete list of menu items for HP Display Assistant when right-clicking on the HP Display Assistant icon in the task tray. If this feature is disabled, only the Exit option will be available in the menu.



- ❑ **Help:** Opens the online help user manual in the default browser window.
- ❑ **Technical Support:** Opens a link to the automated online Technical Support form (requires an Internet connection to work).
- ❑ **Check for Update:** Opens a link to <http://www.portrait.com/prodCurrent.html> and automatically checks for the latest available version (requires an Internet connection to work).
- ❑ **About:** Displays the HP Display Assistant product version and copyright information.
- ❑ **Exit:** Closes HP Display Assistant and turns off background color calibration.
- **Run at system start-up:** Launches HP Display Assistant automatically when you turn on your system.
- **Set Transparency:** Allows the HP Display Assistant interface to be semi-opaque. Transparency set to 0% is fully opaque, and transparency set at 100% is minimally visible.
- **Select Language:** HP Display Assistant can support up to 10 languages. The drop-down menu allows you to switch between the installed language and English.

Help: Opens the Help pane. The **User Manual** button displays the online help user manual for HP Display Assistant. The **Tech. Support** button opens a link to an automated online Technical Support form that can be sent to Portrait Displays for resolution of a problem. The **Tech. Support** button requires an Internet connection to work.

Update: Opens the Update pane. The **Check Update** button opens a link to <http://www.portrait.com/prodCurrent.html> and automatically checks for the latest available version of HP Display Assistant. The **Check Update** button requires an Internet connection to work.

Asset ID: Opens the Asset ID pane, which provides manufacturing data for the monitor.

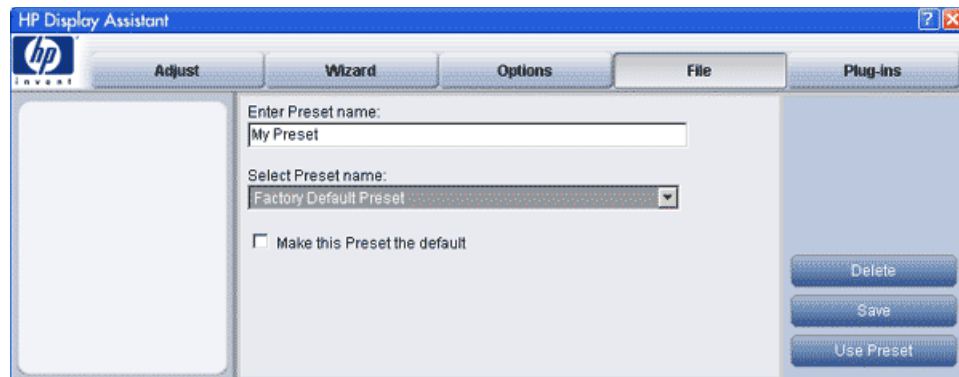
Version: Opens the Version pane, which displays the HP Display Assistant version number and copyright information.

Input: Opens the Input pane for selecting either **Analog In** (analog VGA mode) or **Digital In** (digital mode) as the input source for the display. Some displays do not have both inputs. Selecting a source that is not available will have no effect.

5 Presets

File Tab

Selecting the **File** tab opens the File pane for managing presets. A preset is a file that captures all the monitor settings. You can create multiple presets that can be loaded at any time from the desktop or set to automatically load each time the computer is restarted. Presets can be saved for any combination of adjustments made with HP Display Assistant. You can load the factory default preset to restore the monitor to the manufacturer recommended settings or select a customized preset that you have created.



Customized and Factory Default Presets

Customized presets allow you to save all monitor settings to a user-defined file. Customized presets can be based on multi-user configurations, content specific material, application requirements, and changes in the work environment.

In addition to the customized presets, HP Display Assistant has a Factory Default Preset that is already configured. Loading this preset will reset the display to the recommended factory settings. The Factory Default Preset provides an easy way to restore the image if the monitor is poorly adjusted.



NOTE: The Factory Default Preset can not be deleted or modified.

Creating Presets

After making adjustments to the settings in either OSD mode or Wizard mode, you can save your settings as a preset. The preset dialog options are available on the **File** tab.

1. Adjust the settings in OSD mode or Wizard mode.
2. Click the **File** tab and enter a new file name by highlighting the current file name in the **Enter Preset name** box and typing a new name. The file name that was highlighted and typed over will not be overwritten or deleted.
3. Click the **Save** button. The new file name will be added to the **Select Preset name** drop-down list.
4. If you want to make the new preset the default preset, click the **Make this Preset the default** check box so that a check mark appears in the box.

Modifying Presets

Each time you adjust a setting and close HP Display Assistant you will be prompted to save your settings as a preset. You can create a new preset or modify an existing one. To modify an existing preset:

1. Adjust the settings in OSD mode or Wizard mode.
2. Click the **File** tab and select the preset you want to modify from the **Select Preset name** drop-down list.
3. Click the **Save** button.
4. When prompted with a message asking if you want to overwrite the existing preset, click the **Yes** button.



NOTE: The Factory Default Preset can not be modified.

Loading Presets

There are two ways to load a saved preset: from within HP Display Assistant or from the desktop.

To load a preset from within HP Display Assistant, click the **File** tab, select a preset from the **Select Preset name** drop-down menu and click the **Use Preset** button.

To load a preset from the desktop, right-click on a vacant area of the desktop to display the context sensitive menu, highlight **Select Preset**, then select the preset name from the hierarchical menu.



NOTE: The desktop context sensitive menu can be turned on or off in the **Preferences** pane on the **Options** tab.

Deleting Presets

To delete a preset, select the file name from the **Select Preset name** drop-down menu on the **File** tab and click the **Delete** button.

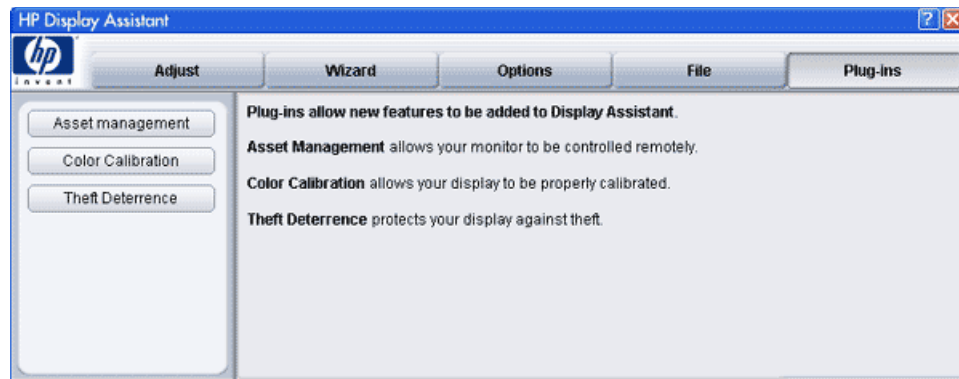


NOTE: Once a preset has been deleted, it can not be restored. The Factory Default Preset can not be deleted.

6 Plug-Ins


Plug-ins Tab

The **Plug-ins** tab contains optional modules that can be installed on an HP Display Assistant-compatible system. A plug-in provides additional functionality beyond the standard OSD replacement functions associated with HP Display Assistant. The version of HP Display Assistant installed on your system may have all plug-ins, some plug-ins, or no plug-ins. Asset Management and Theft Deterrence are available on select models.




To use a plug-in feature, click on the desired button on the left side of the tab.

Asset Management

 **NOTE:** The Asset Management feature is available on select models.


Asset Management provides the IT Manager the necessary components to remotely view and control the monitor. It supports WMI, TCP/IP, and SNMP protocols. This feature is available on select models.

To verify that Asset Management is installed correctly on the client, click the **Asset Management** button and verify that **Asset Management Status** is set to **Enabled**.

 **NOTE:** If **Asset Management Status** is set to **Disabled**, the asset management service failed to load due to a network problem or it was not selected for installation during the installation process.

Color Calibration


The HP Display Assistant Color Calibration feature makes it possible to achieve sRGB color on your LCD. sRGB color is used to display images from Web sites and specifies a color matching technique to provide consistent monitor and output device color. HP Display Assistant color calibration is done through an interactive series of targets used to “dial in” the high, mid, and low tone colors. Once the process is complete, you will experience more accurate color.

 **NOTE:** Selecting the **Factory Default Preset** in the **File** tab will disable color calibration. To enable color calibration, click the **Color Calibration** button in the **Plug-ins** tab and check the **Enable color calibration** box.

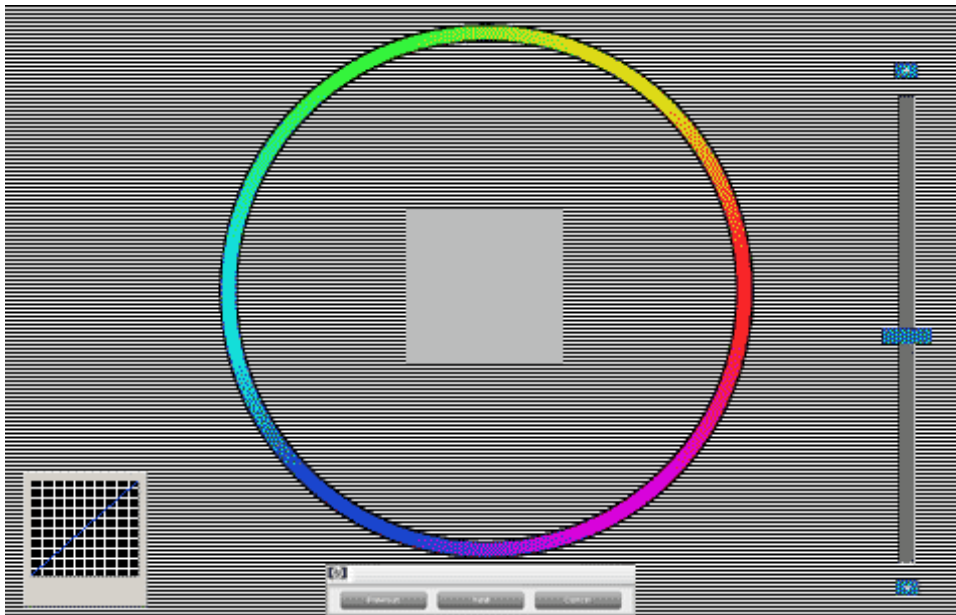
Using HP Display Assistant Color Calibration

The color calibration will take about ten minutes to complete. The process goes through a series of steps to produce sRGB color on your LCD.

1. Click the **Color Calibration** button on the **Plug-Ins** tab.
2. Ensure that the **Enable color calibration** box is checked.

 **NOTE:** Before proceeding, it is recommended that you click the **Show Me** button to run the color calibration tutorial so that you become familiar with the process.

3. Click the **Start** button to launch the color calibration window.



4. Adjust the display's height and tilt for normal viewing. Comfortably position yourself at the distance and viewing angle as you would for every day use. Do not change your viewing angle during the calibration process.
5. Look at the middle square in the color ring. It should appear neutral of any color. If the square appears to have color other than gray present, slowly drag the square toward the same color of the outer color ring until the tint is removed. For example, if the square has blue tint, click on the square and slowly drag it toward the outer blue portion of the ring. This will remove blue tint from the square.

6. Once the square appears to be neutral, move the slider up and down until the square blends into the background. Some targets will not allow the square to completely vanish into the background. Get as close to blending the foreground square into the background gray as possible. Alternate between removing tint from the square and using the slider to get the optimal results.
7. Click the **Next** button to move to the next target in the series. Repeat steps 5 and 6 for each target.
8. Once the process is complete, the **File** tab will be displayed. Enter a name in the **Enter Preset name** box and click the **Save** button to save the settings as a preset.

HP Display Assistant provides a color target to assist in verifying that color calibration was successful. To launch the color targets:

1. Click the **Color Calibration** button on the **Plug-ins** tab.
2. Click the **Quick View** button. HP Display Assistant will load the color target.
3. Click the **View Test Image** button for gray scale or the **View Test Photo** button for color.
4. Click the **View Uncalibrated** button from the target (this will turn color calibration off).
5. Click the **View Calibrated** button from the target (this will turn color calibration on).


Calibrated Target



Uncalibrated Target



Theft Deterrence


 **NOTE:** The Theft Deterrence feature is available on select models.

The Theft Deterrence feature should only be used with a single-monitor and computer configuration. Dual-monitor use is not supported.


The HP Display Assistant's Theft Deterrence feature minimizes theft or unauthorized relocation of the display. Theft deterrence does not prevent the display from being stolen, but hinders the operation of the display once it is removed from the host computer.

Setting Up Theft Deterrence

1. Click the **Theft Deterrence** button on the **Plug-ins** tab.
2. Click the **Enable Theft Deterrence** button.
3. Enter a personal identification number (PIN) in both PIN boxes.

 **NOTE:** The PIN number must be between 1000 and 999999999. Non-numerical characters are not permitted.

4. Use the slider to set a timer value between five and sixty minutes. The timer value is the number of minutes allowed for normal operation of the monitor after a theft condition occurs and before displaying the theft warning message.
5. Click the **Accept** button. Follow the instructions (below) to register your PIN to a secured Web site.

 **NOTE:** HP strongly recommends that you register your PIN number. In the event that you lose, misplace, or forget your PIN, HP will not have access to this information. Loss of the PIN is not considered an HP Service event and is not covered under the product warranty. You must ensure that a careful record of your PIN number is maintained.

Registering Your PIN Number

HP Display Assistant software provides a mechanism for creating and storing the PIN to a secured Portrait Displays Web site for safe keeping. You should also keep your PIN information in a secure area away from your display for future reference. If you have forgotten your PIN and it is registered on the secured Web site, you can retrieve it through e-mail.

To change your PIN or get a reminder, you must be connected to the Internet. Access the Portrait Displays website below and follow the instructions for changing or retrieving your PIN.

<https://pinreg.portrait.com/index.php>

Triggering Theft Deterrence Mode

The following actions must occur for the theft timer to be activated:

- Both the power and display cables must be removed.
- The display is attached to a different computer.

Once both actions occur, the monitor detects theft and begins a countdown based upon the time value established by the user (in Step 4 above). If the correct PIN is not entered, the display will enter theft mode and a large warning message will appear on the screen.



NOTE: If Theft Deterrence is enabled and you want to move your monitor to a different computer, you must either disable Theft Deterrence to completely avoid triggering a theft condition or install HP Display Assistant on the new computer and enter your PIN when prompted the first time you turn on power to the computer.

Overriding Theft Deterrence Mode


To override Theft Deterrence, press the + and – buttons on the front panel of the monitor at the same time and hold the buttons down for ten seconds. This effectively cancels your PIN number. To reestablish Theft Deterrence, you must go through the process described above for “Setting Up Theft Deterrence.”

7 Tips & Troubleshooting

HP Display and Graphics Card Compatibility

HP Display Assistant is a Windows-based software utility designed for select HP displays that support the Display Data Channel/Command Interface (DDC/CI) communications channel defined by the Video Electronics Standards Association (VESA). HP Display Assistant does not function on non-HP displays (including non-HP displays that support DDC/CI), and does not function on HP displays that do not support DDC/CI. For a list of leading graphics cards that support HP Display Assistant:


1. Open HP Display Assistant.
2. Click the **Options** tab.
3. Click the **Help** button.
4. Click the **Tech. Support** button to open the HP Display Assistant online support Web page.
5. Click the **Compatibility** link on the Web page.

 **NOTE:** You can also open the HP Display Assistant online support Web page by right-clicking on the HP Display Assistant icon in the task tray then clicking the **Technical Support** option in the task tray menu.

HP Display Assistant Software Update

Software updates for HP Display Assistant ensure that you have the latest features and the widest range of compatibility with graphics cards. To determine if a software update is available:

1. Open HP Display Assistant.
2. Click the **Options** tab.
3. Click the **Update** button.
4. Click the **Check Update** button to open the HP Display Assistant online support Web page.

 **NOTE:** You can also check for software updates on the HP Display Assistant online support Web page by right-clicking on the HP Display Assistant icon in the task tray then clicking the **Check for Update** option in the task tray menu.

Asset Management (Select HP Display Models Only)

HP Display Assistant's Asset Management feature allows supported HP display models to be tracked and controlled within a large business or enterprise. By default, the Asset Management plug-in is not automatically installed with HP Display Assistant. To install this feature, check the **Plug-In Asset Management** box during the HP Display Assistant installation process. The optional Asset Management plug-in can also be added to your HP Display Assistant configuration at a later time by repeating the installation process. If Asset Management is installed, you can view your individual "client" status by clicking the **Plug-ins** tab then clicking the **Asset Management** button.

Cautions for Theft Deterrence Function Operation (Select HP Display Models Only)

Select HP display models include a Theft Deterrence function to deter unauthorized third-party removal or theft of the display. If your HP display model includes the Theft Deterrence function, be sure to remember your password (PIN) to lock or unlock the display to your computer. You can change your PIN or receive a reminder by going to the following Web page:

<https://pinreg.portrait.com/index.php>

If HP Display Assistant Is Not Working

In some cases, HP Display Assistant may only allow access to the **Support** tab. If you just installed HP Display Assistant and it is not working, confirm that your HP display model and graphics card are compatible with HP Display Assistant. If you have confirmed compatibility, try the following steps:

1. Check the video cable to be sure it is tightly secured to the graphics card and display. If possible, use the video cable supplied with the display.
2. Power cycle the display by turning it off and then unplugging the power cord for at least 30 seconds. Reconnect the power cord and turn the display on.
3. Confirm that you are using the latest graphics card display driver. Driver updates are typically available online from most graphics card manufacturers.
4. Reinstall the HP Display Assistant software.

If HP Display Assistant was previously working but no longer allows access to the tabs, perform the following steps to correct the problem:

1. Right-click on the HP Display Assistant icon in the task tray.
2. Click the **Exit** option in the task tray menu.
3. Double-click on the HP Display Assistant desktop icon to open the application and establish communication with the display.

If HP Display Assistant was installed using a supported HP display model and you switch the display, you may have problems running HP Display Assistant on the replacement display. Confirm that HP Display Assistant is compatible with the replacement display (this should be an HP display model) and then try the following steps:

1. Click on the Microsoft Windows **Start** button.
2. Select **Programs**, then **HP Display Assistant**.

3. Click on **Diagnostics** to open the Display Diagnostic Utility.
4. Click on the **Clean Registry** button to remove the old display information from the Microsoft Windows registry files.
5. The computer will restart and store the new display information in the Microsoft Windows registry files.

Laptop Users


If HP Display Assistant is installed on your laptop and you plug in a compatible HP display model, you should exit the HP Display Assistant application and then re-launch it.

1. Right-click on the HP Display Assistant icon in the task tray.
2. Click the **Exit** option in the task tray menu.
3. Double-click on the HP Display Assistant desktop icon to open the application and establish communication with the display.

Technical Support

If you still have questions, technical support for HP Display Assistant is available online. To open the technical support Web page:

1. Open HP Display Assistant.
2. Click the **Options** tab.
3. Click the **Help** button.
4. Click the **Tech. Support** button to open the HP Display Assistant online support Web page. In order to provide optimal technical support, it is recommended that you let HP Display Assistant automatically complete your system information when you submit the technical support form.

 **NOTE:** You can also open the HP Display Assistant online support Web page by right-clicking on the HP Display Assistant icon in the task tray then clicking the **Technical Support** option in the task tray menu.
