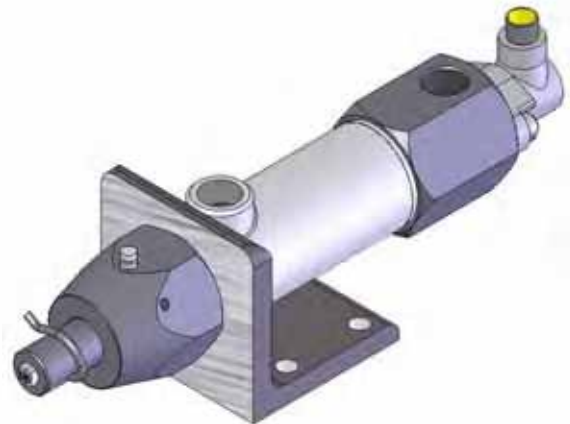


## Model 288: 3 Ton Double Acting Air Impact Marker

**Model 288 3-TON:** The patented design of the 288 gives a marking pressure of three tons or 6,000 lbs which results from using 2.25" stroke with 80 psi air pressure.

- 3 basic styles include Standard, Extreme Industrial, or Submersible. Standard models are great for rugged industrial marking. Extreme Industrial models are specially coated in a non-corrosive material for additional protection. Submersible units are both coated and are keyless and offer reliable marking in leak test applications.
- 3 Mounting styles include standard angle bracket, reverse angle bracket and straight sub-plate. Special mountings provided upon request.
- 3 Standard rod styles to hold the stamps offer multi-character OA or OAS38, and single character OB
- 3 different approach strokes: 2 1/2", 4" and 6"



- Integrated position sensors offer the added benefit to integrators
- Standard marker requires lubricated air. The NL non-lube version is required for "dry" air.

### Model 288 How To Order

**To Order:** Select only the symbols that represent the marker feature that is needed. Place that symbol in the sequence as shown.

FEATURE	SYM.	EXAMPLE
288 Standard	288	288SP-OB-40-D
288R (reverse angle bracket)	288R	_____
288SP (sub plate)	288SP	_____
Standard	-	_____
Complete submersion	SUBU	_____
Dirty Environment	SUBK	_____
Rod Style "A"	OA	_____
Rod Style "AS38"	OAS38	_____
Rod Style "B"	OB	_____
Stroke 2.5"	25	_____
Stroke 4.0"	40	_____
Stroke 6.0"	60	_____
End ported end cap	E	_____
Side ported end cap	S	_____
24VDC Position Sensor	D	_____
110VAC Position Sensor	P	_____
Non-Lube* (if required)	NL	-----

\*Permanently lubricated marker for low maintenance requirements  
D= 24V DC, PNP sourcing Euro connector  
P= 110v, Mini connector

Recommended Air Hose: 3/8" I.D. minimum  
Recommended Air Valve: 3/8" 4-way solenoid valve  
Operating Pressure: 20 to 80psi  
Max. Marking Pressure: 6000lbs (at 80psi)

#### Stamp Capacity Rod Style "B"

(1) Pc CM8X round insert can mark up to a 1/4" character.

**Stamp Capacities Rod Style "A"**  
(4) Pc's 1/16" Char. CMG06 Stamp Inserts

(2) Pc's 1/8" Char. CMG13 Stamp Inserts

#### Stamp Capacities Rod Style "AS38"

(6) Pc's 1/16" Char. CMG06 Stamp Inserts

(3) Pc's 1/8" Char. CMG13 Stamp Inserts

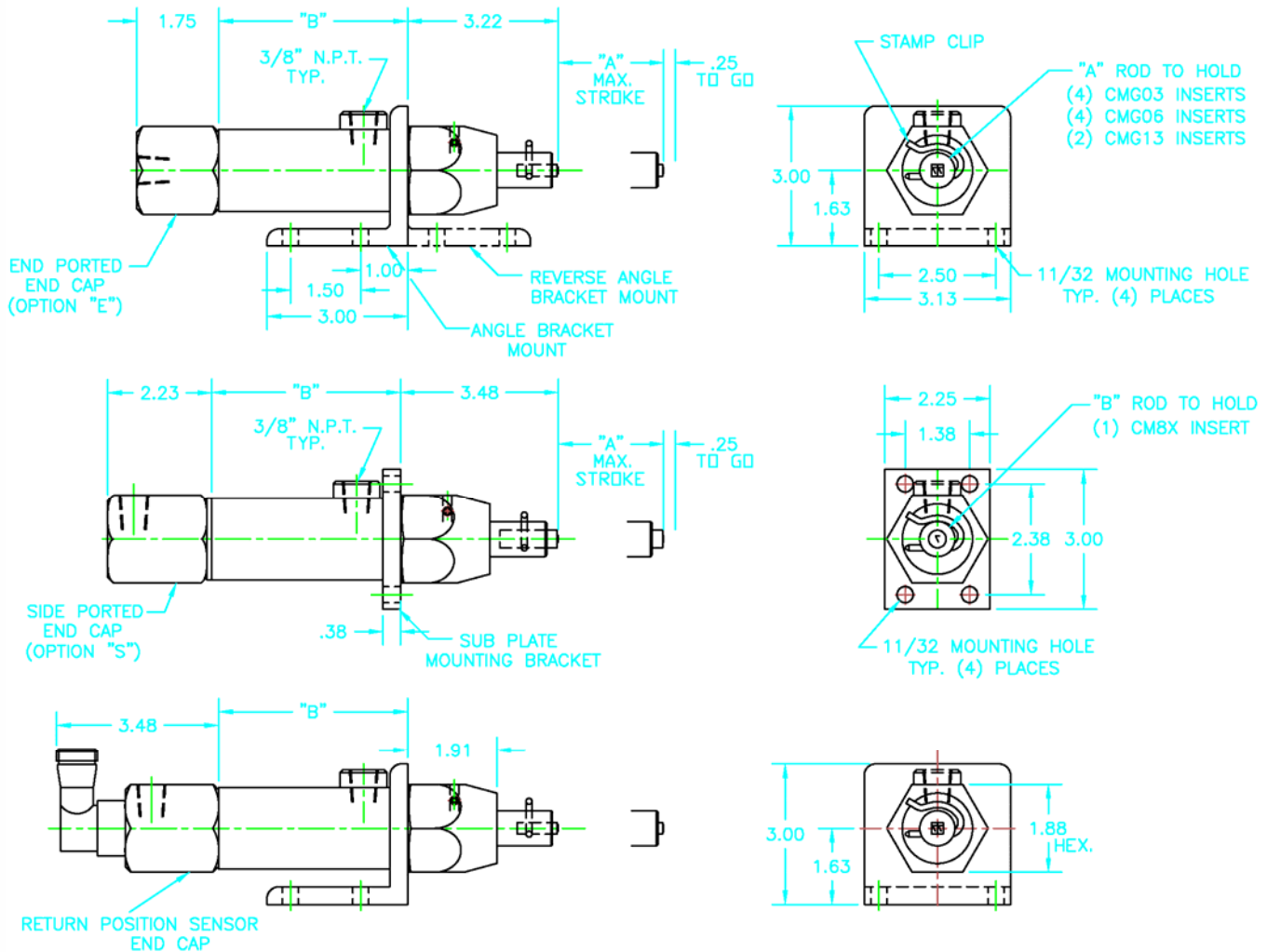


Rod Style B



Rod Style A

### Model 288 Dimensions



#288-0A-25-P IS THE MODEL SHOWN ABOVE

Stroke Options	Dim A	Dim B
2 1/2"	2.25	4.03
4"	3.75	5.53
6"	5.75	7.53

- Custom mounting plates available upon request – Please note that mounting plates can not be removed after purchase
- OAS style rod is similar to OA style rod, with wider 3/8" pocket
- Proper backup required for parts being marked

