

SPECIFICATIONS

Frequency Range: 40-7000 Mc, and at lower and higher frequencies with decreased sensitivity.

Local Oscillator Output: Must be sufficient to produce at least 0.2 ma crystal current, and must be adjustable to keep crystal current below 5 ma.

Output-Filter Cutoff Frequency: 40 Mc.

Conversion Loss at 30-Mc Output: Depends on load impedance. About 6 db with Type 1216-A Unit I-F Amplifier when local-oscillator fundamental is used.

Typical Sensitivity: 5 μ v for discernible deflection on communications receiver S meter or meter on Type 1216-A.

Accessories Required: Local oscillator. Type 1216-A Unit I-F Amplifier or suitable communications receiver. Patch cords for input and output connections.

GENERAL RADIO EXPERIMENTER reference: Vol XXVIII No. 12 May '54

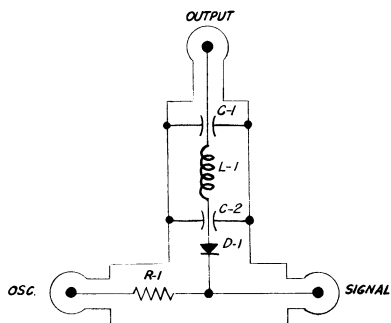


Figure 1. Schematic Diagram.

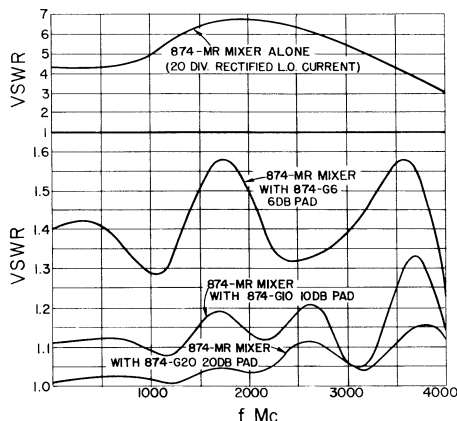


Figure 2. VSWR Curves with Various Pads.

PARTS LIST

REF	DESCRIPTION	GR NO.	REF	DESCRIPTION	GR NO.
R1	RESISTOR, 247.5 Ω ±1%	REU-10-4	D1	CRYSTAL DIODE	1N21B
C1	CAPACITOR, 10 μ f	Built in	L1	CHOKE, 3.3 μ h ±5%	ZCHA-45
C2	CAPACITOR, 10 μ f	Built in			

GENERAL RADIO COMPANY WEST CONCORD, MASSACHUSETTS

NEW YORK: Broad Avenue at Linden
Ridgefield, New Jersey

SYRACUSE: Pickard Building, East Molloy Road
Syracuse 11, New York

PHILADELPHIA: 1150 York Road
Abington, Pennsylvania

WASHINGTON: Rockville Pike at Wall Lane
Rockville, Maryland

FLORIDA: 113 East Colonial Drive
Orlando, Florida

CHICAGO: 6605 West North Avenue
Oak Park, Illinois

LOS ANGELES: 1000 North Seward Street
Los Angeles 38, California

SAN FRANCISCO: 1186 Los Altos Avenue
Los Altos, California

CANADA: 99 Floral Parkway
Toronto 15, Ontario

GENERAL RADIO COMPANY (Overseas), Zurich, Switzerland
Representatives in Principal Overseas Countries