



TYPE 874-VR AND -VRL

VOLTMETER RECTIFIER

1 INTRODUCTION

1.1 PURPOSE. The Type 874-VR/-VRL Voltmeter Rectifier (Figure 1) is primarily designed to operate as a voltage monitor in a 50-ohm coaxial system. With a suitable indicator, it will monitor the voltage behind a 50-ohm resistor and will thus serve as a very useful "building block" in measuring systems.

1.2 DESCRIPTION. The rectifier consists of a short piece of 50-ohm line with a diode mounted between the inner and outer conductors. The r-f signal is bypassed by means of a 300-pf mica disc capacitor and the detected output is brought out through the center connector of the rectifier. At the r-f output end, a 50-ohm resistor is mounted in series with the center conductor close to the diode to provide a 50-ohm source impedance. The output end is marked by an "R" engraved on the outer conductor. The detector is a Type 1N23B diode. All connectors are Type 874.

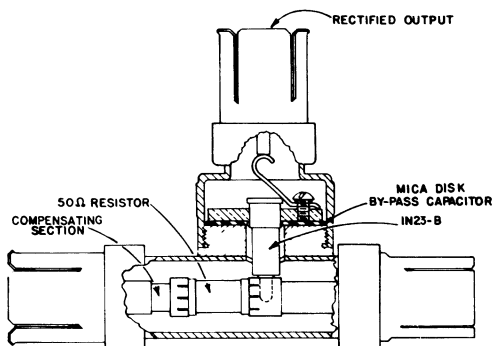


Figure 1. Interior detail of Type 874-VR.