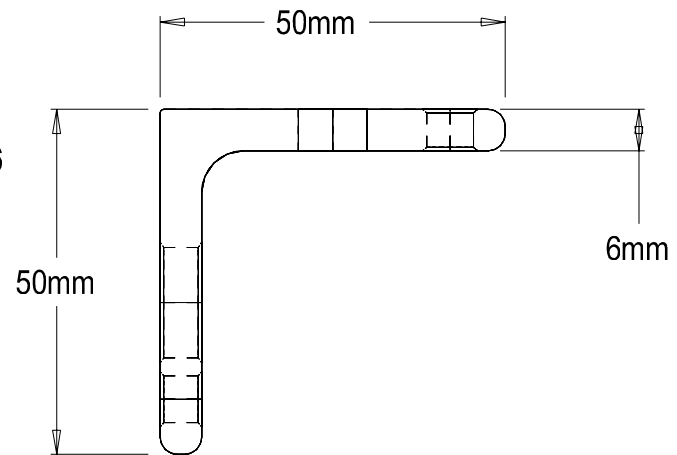
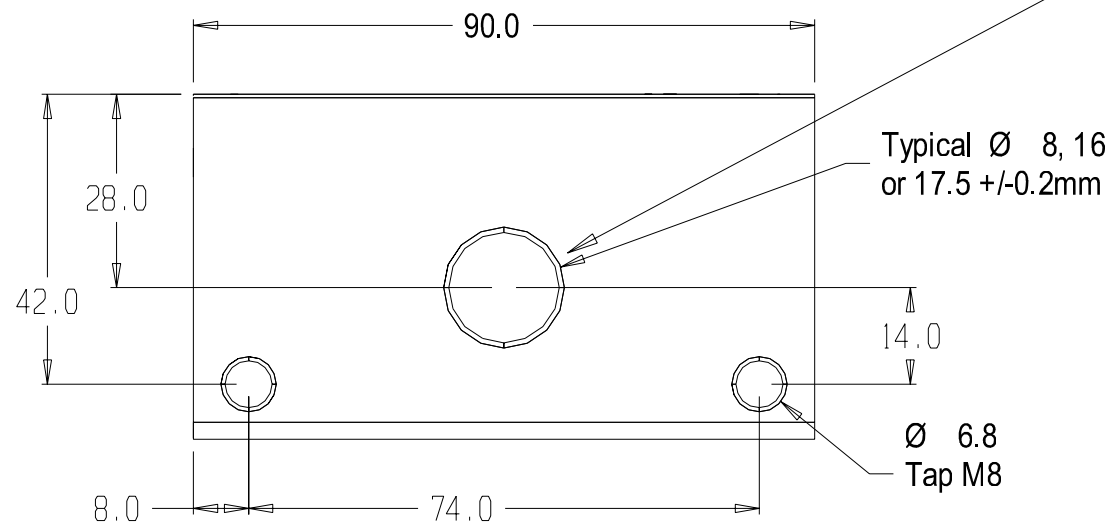


Typical EMP and/or
Aerial Fixing
(1 or 2 Holes)



MATERIAL	Angle
Angle	50x50x6
ALLBY	SS-304
EST. AREA	xxx nn
EST. WEIGHT	kg/n
EST. PERIPHERY	EXT: xxx nn
TOT: xxx nn	
TOLERANCE	0.00nn ±0.1nn
	00.00nn ±0.25nn
	0000nn ±0.5nn
	0-600nn ±0.1nn
	> 600nn ±0.5nn
BS1474:1987	APPLIES UNLESS OTHERWISE SPECIFIED
JOB No.	3026

CASA Part Number = BKT-90x50x6-17-70-SS304(EXI)



Modular Systems

P. O. BOX 38-828, WELLINGTON, NEW ZEALAND
TELEPHONE : (64-4) 5687 277
FACSIMILE : (64-4) 5685 161

CUSTOMER : CASA Modular Systems

DESCRIPTION : BRACKET 90x50x50x6 SS304

SIZE DRAWING Reference No. ISSUE

A4 BKT-EXIC A

DRAWN : A.W.D. DATE : 24/08/98 APPROVED : ? DWG. SCALE : 1:1

© COPYRIGHT : CASA Modular Systems ALL RIGHTS RESERVED