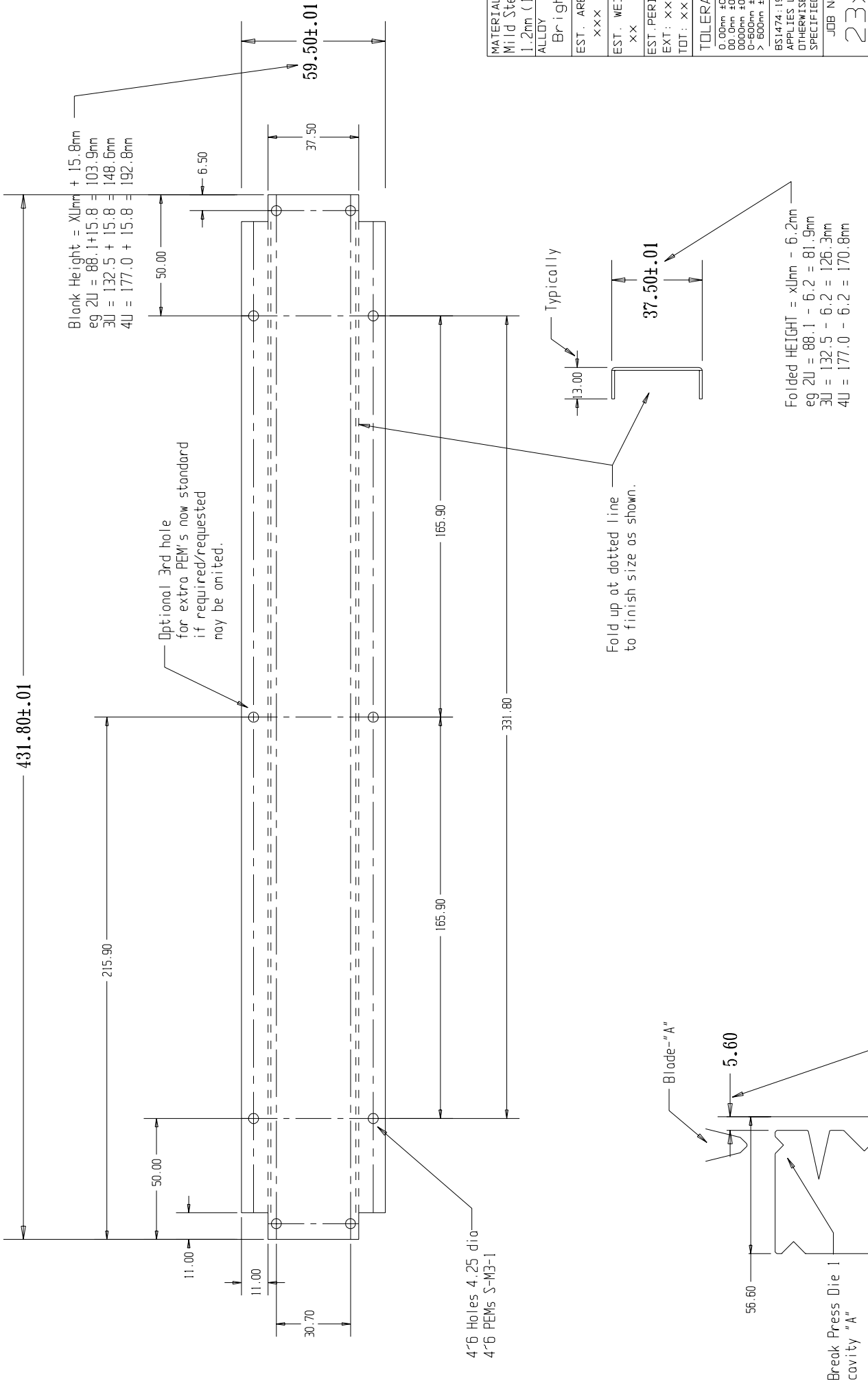


CASA Part Number for UN-folded part = IMBP-1U-MS12(Blank)  
 for FOLDED part with PEMs fitted = IMBP-1U-MS12  
 for folded part ZINC Plated and with PEMs fitted = IMBP-1U-MS12ZP

NOTE - This Panel is ONLY for use with  
 CASA's Full Height INSTRUMENT Modules.



MATERIAL	Mild Steel
EST. AREA	1.2mm (18SWG)
ALLOY	Bright
EST. WEIGHT	XXX mm
EST. PERIPHERY	XX kg/m
EXT. : XXX mm	
TOT. : XXX mm	
TOLERANCE	0.00mm ±0.1mm 00.0mm ±0.25mm 0000mm ±0.5mm 0-600mm ±0.1mm > 600mm ±0.5mm
BS1474:1987	APPLIES UNLESS OTHERWISE SPECIFIED
JOB No.	23XX

CUSTOMER : CASA Modular Systems	SIZE : A4	DRAWING Reference No. : IMBP-1U	ISSUE : B
DESCRIPTION : BACK Panel Instrument Module			
DATE : 12/08/96	APPROVED : ?	DWG. SCALE : 1:1	COPYRIGHT : CASA Modular Systems ALL RIGHTS RESERVED
DRAWN : A.W.D			
P.O. BOX 38-828, WELLINGTON, NEW ZEALAND			
TELEPHONE : (64-4) 5687 277			
FACSIMILE : (64-4) 5685 161			