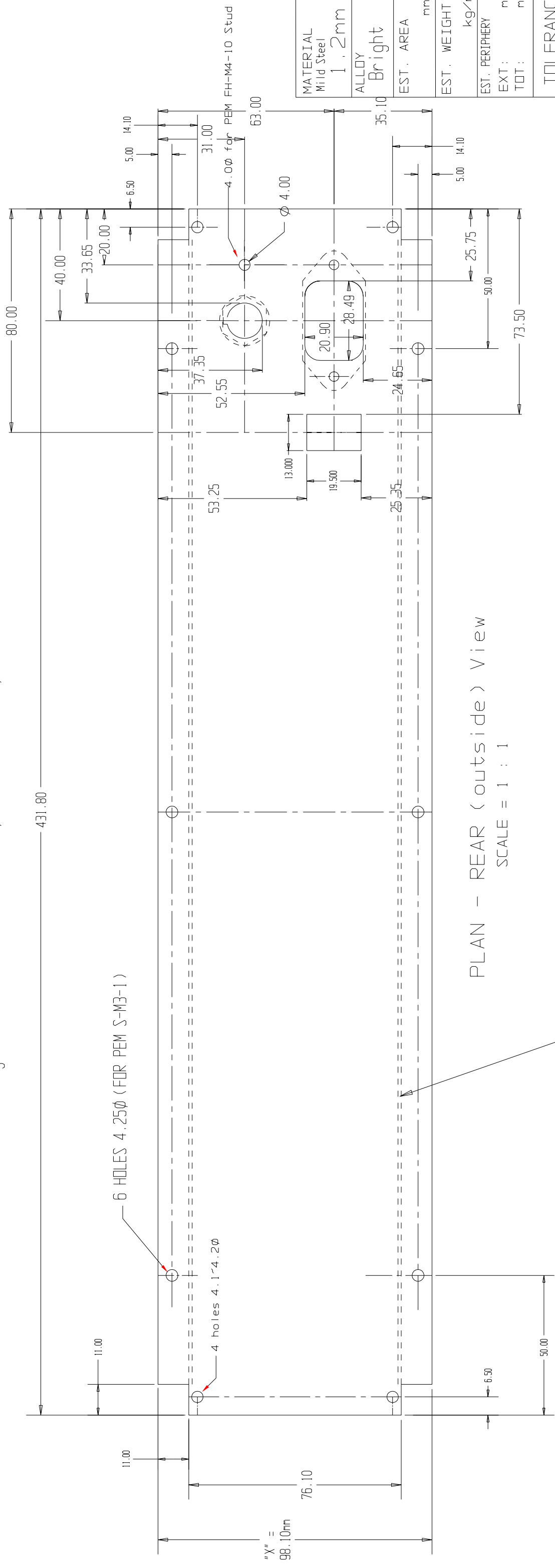


CASA Part Number = "MRP-2U-MS12N-(MFS)" = REAR Panel for 2U High Module Punched for EIA Socket, 20x5mm Fuseholder, Gound Stud.



PLAN - REAR (outside) View
SCALE = 1 : 1

Fold DOWN 90 deg (both sides).

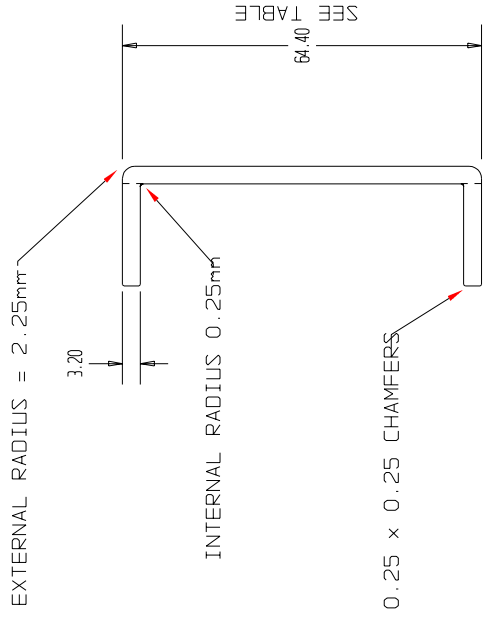
DEVELOPED HEIGHT "X" = Umm+10mm

U mm Height	No. of Units	Developed Height "X"
43.7mm	1U	53.7
88.1mm	2U	98.1
132.5mm	3U	142.5
177.0mm	4U	187.0
221.5mm	5U	231.5
265.9mm	6U	275.9
310.4mm	7U	320.4
354.8mm	8U	364.8

FOLDED HEIGHT "Y" = Umm-11.14mm

No. of Units	Folded Height "Y" ± 0.1mm
1U	32.56
2U	76.96
3U	121.36
4U	165.86
5U	210.36
6U	254.76
7U	299.26
8U	343.66

NOTE - This table is suspect the calculations may be in error and need to be verified against basic design details.



FOLDED SECTION

SCALE = 1 : 0.5

MATERIAL	Mild Steel
1.2mm	
ALLOY	Bright
EST. AREA	mm
EST. WEIGHT	kg/m
EST. PERIPHERY	mm
EXT. TOT:	mm
TOT:	mm

TOLERANCE
0-600mm ±0.1mm
> 600mm ±0.5mm

BS1474:1987
APPLIES UNLESS OTHERWISE SPECIFIED

SURFACE FINISH	Visible surfaces denoted
NATURAL	□
LYNISH	□
DE-BURR	□
ANODISE	□
PAINT	□
PLATE	□
ALLODIZE	□
SHOTBLAST	□
OTHER DETAIL	□
See Notes	□

JOB No.

3	Re-name "MBP.." and odd switch	A.W.D.28/3/01			
2	Update to 6 PEMs on lip and Patterns	A.W.D.10/7/95			
1	Fold Detail Added. Trans. to CADKey	A.W.D.19/3/95			
No.	REVISION DETAIL	DRAWN	DATE	APP'D	
Modular Systems		CASA Modular		SIZE	DRAWING Reference No.
Rear Panel with Mains/Fuse/Gnd Stud		A2 MBP-2UMF		ISSUE	A
P.O. BOX 38-828, WELLINGTON, NEW ZEALAND		DATE: 28/03/01		COPYRIGHT : CASA Modular Systems.	
TELEPHONE : (64-4) 5687 277		APPROVED : As shown		ALL RIGHTS RESERVED	
FACSIMILE : (64-4) 5685 161		SCALE : As shown			