

19" Wooden Rack Consols & Cabinets

This ECONOMY Wooden Rack and Rack Console System deploys the strategic use of CASA's type RA393 Rack Angle and is aimed at installations where lower cost or short system life means that the amortisation of cabinet costs is not compromised by system re-engineering, unexpected expansions or upgrades.

These Consoles typically cost 1/2 of their all metal equivalents BUT have all the features of CASA modularity and fundamental design criteria:

C - compatibility **A** - adaptability **S** - simplicity **A** - acceptability

Special features include:

1) - new-design of our original wooden consoles such that they are CKD - this now means that they can be shipped more economically from the kick-stand sub-components and assembled on-site, using a few basic hand or portable electric tools.

The exploded drawing indicates the basic concept for a 28U x 650mm deep console. We will provide photographs in due course.

2) - sections of the rear portion of the Desk Top may be cut out to give clearance for deeper equipments installed in the lower

3) - extra dress panels may be used in ANY of the 14U openings that do not require RA393 (or will fill openings you do not wish to be left blank)

4) - an optional "Tie Bar" can be fitted, or retrofitted, to any consoles that do NOT require a DESK top - OR - where a rear strut is desired to strengthen the whole structure (as shown in drawings) - this also fills the 1U gap between the upper and lower REAR 14U racking angles OR the upper and lower 14U dress panels.

5) - the choice of the more expensive Meltika/Formica/Laminated finishes adds slightly to the overall dimensions - just the amount of the PVC edging applied to most of the external edges (typically adds 2~3mm to each external edge) AND the added thickness of the laminated surface (adds 1/2~1mm to each flat surface) .

continued - page 3

Illustrated Model = CON-28Ux650-MDF18.....

Brief Specification: (see drawings for general dimensions and practical arrangements)

➔	Standard Height: 28 Units (1U = 44.45mm)	1405mm
	Standard Depth:	600mm 650mm
	Special Depths to order:	500~1200mm to order
	Dimensional Tolerances:	typically +/- 0.5mm
➔	Finishes:	2 pot MirrorTone
		Meltika Laminates
		other surfaces to order
➔	Standard Colours:	Charcoal Blue Velvet
		other colours to order
➔	Weight: (for basic consol as illustrated)	estimated - 56 Kg

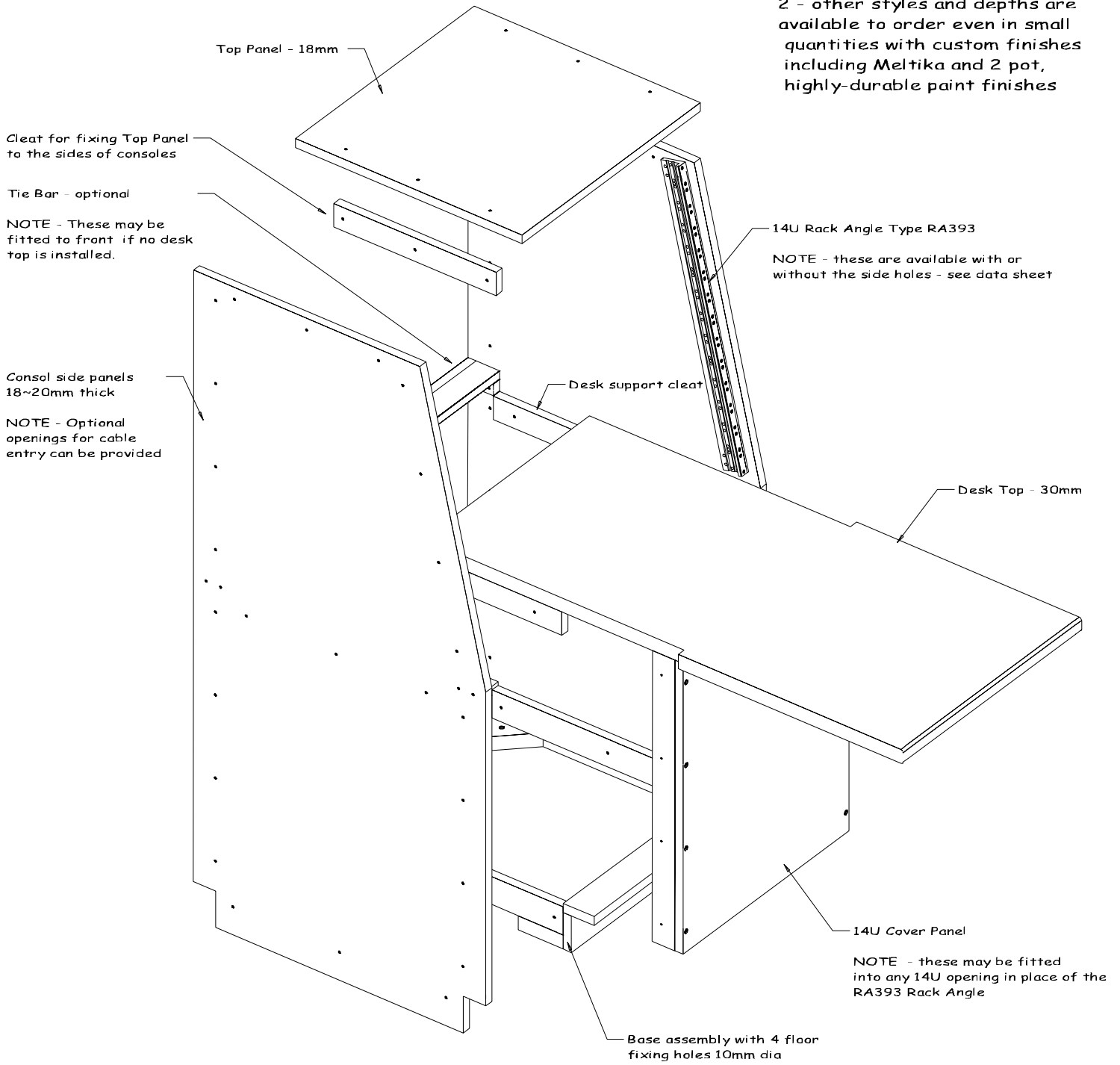
Intelligent Part Number: CON-xxU x yyy-MDF18-F(special adder/suffix)

Please compose a Part Number according to this system and use on your official order.	CON-	Prefix to indicate "consul" or related products or accessories.
	xxU-	Overall cut LENGTH in exact RACK Units (actual length = xxU x 44.45 millimetres).
	yyy-	Overall Depth of the widest part of the consol (excludes the desktop projection)
	MDF18-	Medium Density Fibre Board - 18mm thick - the primary construction material
	F-	The FINISH applied to the part (EC=Epoxy Charcoal, MC=Meltika Charcoal etc.)
	(-----)	Special adder or other suffix for custom reference detail.

CASA Rack Consol - 28U x 650mm

NOTE

- 1 - just add side-by-side to create a suite of racks and/or consols.
- 2 - other styles and depths are available to order even in small quantities with custom finishes including Meltika and 2 pot, highly-durable paint finishes



Continued from page 1

6) - customers need fit ONLY the amount of RA393 and/or 14U Dress Panels they require, however, the dress panel gives lateral seismic strength to the consul - without one of these panels the structure is largely dependant upon the installed equipments for lateral rigidity.

7) - the choice of a 600mm minimum depth is based upon efficiencies in cutting from the 2400x1200mm sheets of material - for economy, however, minimum depth depends upon the needs of installed equipments (particularly video display monitors) unless rearward projections of installed equipments is permitted behind the rack.

8) - the wooden 'suite' includes FULL 28U racks, without the consul face, and stepped racks with vertical upper sections - upper add-on sections with tilt-down fixing for monitors can be retrofitted - please enquire for further details and/or drawings.

9) - with the facility of CNC woodworking machinery and our CAD system it is possible to provide custom adaptations of the basic design economically and in standard or special finishes even in small quantities AND at short delivery.

10) - the modularity of the design provides for expandability EVEN retrospectively since we can supply retrofitable insertable fastenings that allow OLD holes to be converted to NEW purpose with little compromise to the strength or cosmetic properties of the suite.

11) - if metal screening is required then we are able to laminate 0.6~0.9mm aluminium (or possibly steel) sheet to the inner surfaces of all major panels - these may be grounded with conventional hand wiring between each individual panel. Typically the connection can be made from QC tabs screwed to each panel to provide easy disconnection/re-connection.

12) - when required, ventilation management can be provided to meet customer's needs - CASA has ventilation panels with and without fitted fans and dust filters.

13) - the CASA consoles are compatible with 19" EIA and IEC dimensions and details of the full range of Power Distribution, Shelves, Brackets, Sub-Rack Modules, Panels and other CASA parts is available upon request.

14) - base fixing is facilitated by 4 solid cleats fastened into the base/plinth of each Rack or consul - these 10mm holes provide clearance for 8mm coach screws of dynabolts etc.

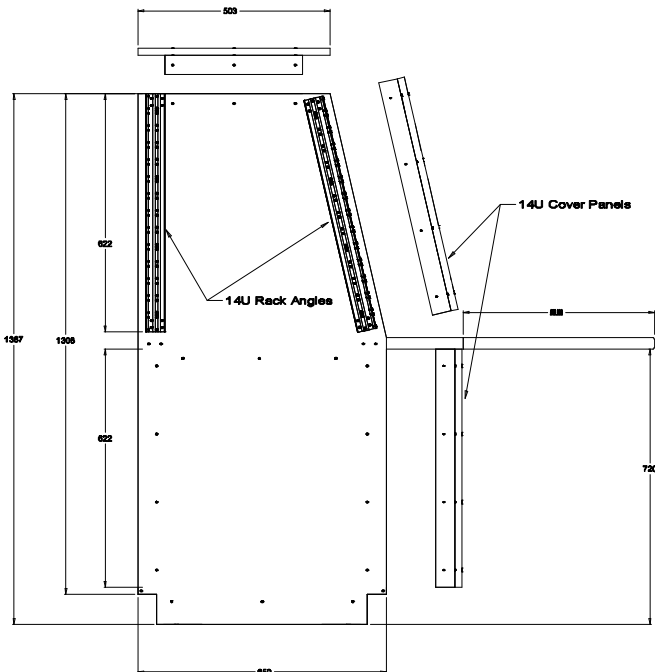
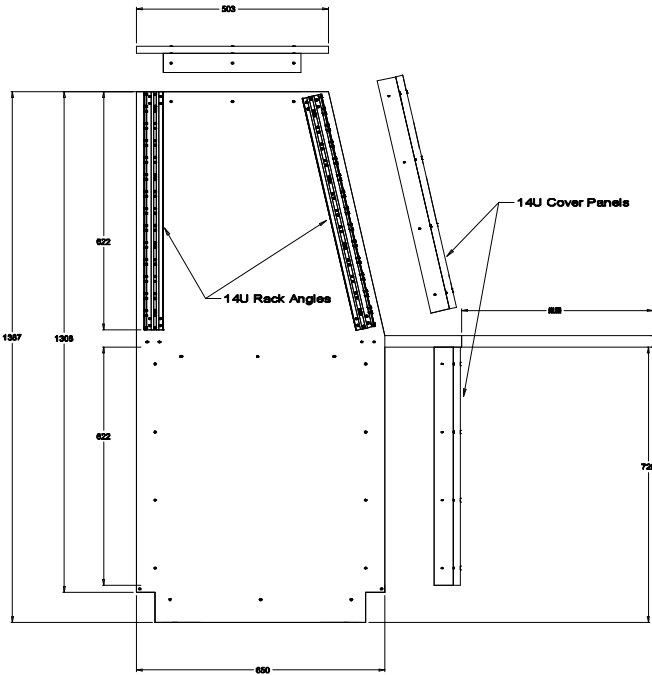
please enquire for further details & additional drawings

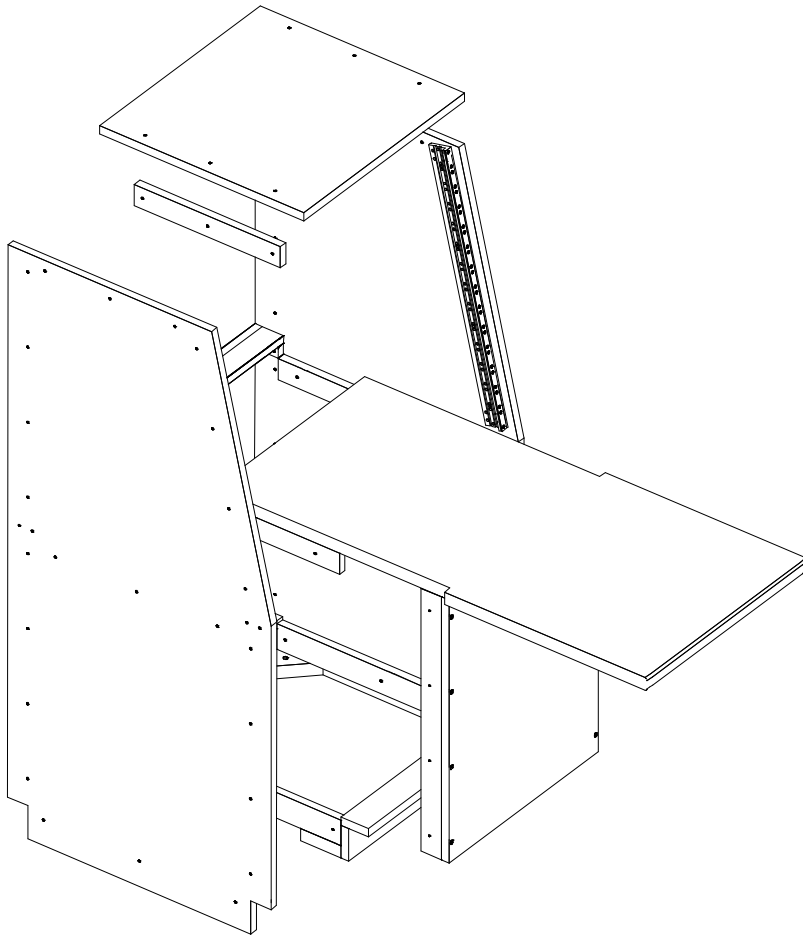
ASSEMBLY & INSTALLATION - when consoles are to be assembled and/or arranged side-by-side in a suite there is need to drill a few clearance holes in the sides and in alternate RA393 aluminium angles such that thru-bolts engage with appropriate - full assembly instructions, assembly drawings and data sheets are supplied - verbal clarification is freely available from our design staff.

Typical assembly tools include:

- 1) Allen Key (3 or 4mm AF hex wrench) - for thru-fixing the RA393 Rack Angles and fixing the lower side panels to the base/plinth
- 2) #2 PoziDrive screw driver - to suit the #8 gauge TwinFast Screws - a torque-adjustable electric/pneumatic driver is recommended
- 3) drills for any necessary pilot holes and/or opening thru-holes between the consoles
- 4) hole saw or jig saw - for making any cable holes for passing interconnect cables between the consoles

NOTE - for detailed assembly instructions - see page 4





The basic installation steps include:

- 1) - mark our the floor fixing holes for the 1st plinth and prepare for the appropriate fasteners (coach-screws for wooden floors or terrier bolts etc. for concrete)
- 2) - identify the thru-holes that need opening (typically from 3mm to 5mm) and carefully drill out to preserve positional alignment - deburr holes as appropriate.
- 3) - identify and drill any needed thru-holes in the side panels for engagement with adjacent consoles/racks AND for securing the RA393 Aluminium angles - lightly de-burr the holes as appropriate.
- 4) - identify and drill any needed thru-holes for adjacent consoles in the RA393 aluminium sections and de-burr - fit the RA393 angles on to the appropriate surfaces of the side panels.
- 5) - install any appropriate Desk Support Cleats to the insides of the appropriate side panels using 30-35mm #8 TwinFast screws
- 6) - fasten the sides to the plinth using the 6 special black M5x35 high-tensile CSK socket head machine screws engaging with the special M5 nut inserts installed from inside the plinth - tighten until barely firm from the side panels - NOTE - final tightening occurs last.
- 7) - install the Top Panel and screw fasten from inside with 4 to 6 of the #8 x 30-35mm TwinFast screws
- 8) - install and fasten the 14U cover panel (if used) from inside using 4 to 8 of the #8 x 30mm TwinFast screws - NOTE - do not fully tighten

NOTE - the 14U Cover Panels are precision machined and in the absence of a suitable tri-square, should serve as a squaring jig.

9) - check general fits - check squareness - tighten all screws until their heads are near flush with the surfaces - OR - until the appropriate torque has been reached.

NOTE - take care that none of the points of screws protrude behind that external surfaces where they may cause injury - if this happens the offending screws MUST be replaced with a shorter version of the same style.

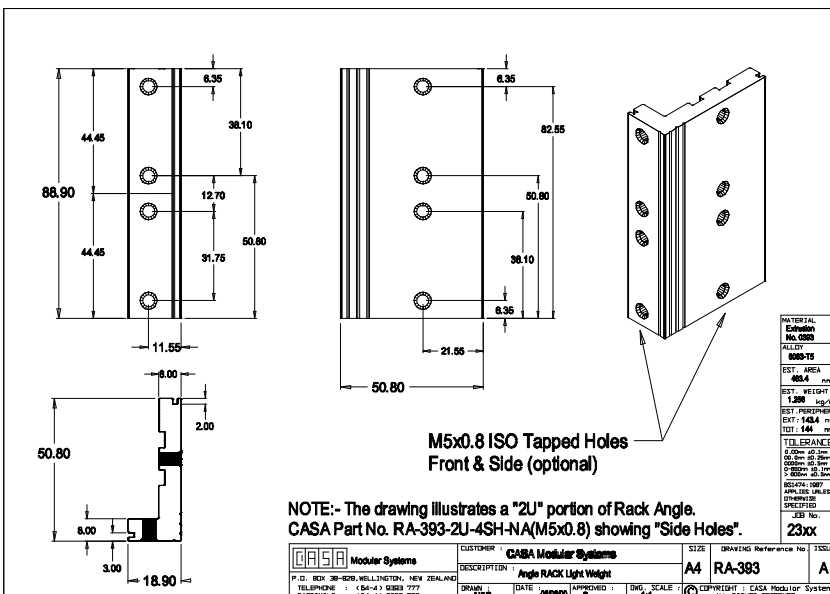
10) - place the assembled consul structure over the floor fixing holes.

11) - check the structure for level by deploying a suitable builders level and pack underneath each of the fixing points to ensure that when the bases is bolted down the pressures bear evenly under the diagonal corner blocks AND remains level when the correct bolting down forces are applied. NOTE - ensure that suitable flat compression washers are installed under the heads of the base fixing bolts.

12) - install and fix the internal equipments

13) - install and fix the Desk Top - use 4 to 6 of the #8 x 50mm TwinFast CSK screws

NOTE - for a suite of consoles/racks the WHOLE wooden assembly MUST be completed and tightened together PACKED and LEVELLED before final fixing to the floor AND before ANY equipments are installed.



Opening to accept PELCO 20" Model PMC21A (which is 10U = 444.5mm (or 14" Model PMC14F which is 8U) Colour Monitor with Rack Brackets

16 holes 3mm dia. for fixing the RA393 Rack Angles or fixing the wooden in-fill panels

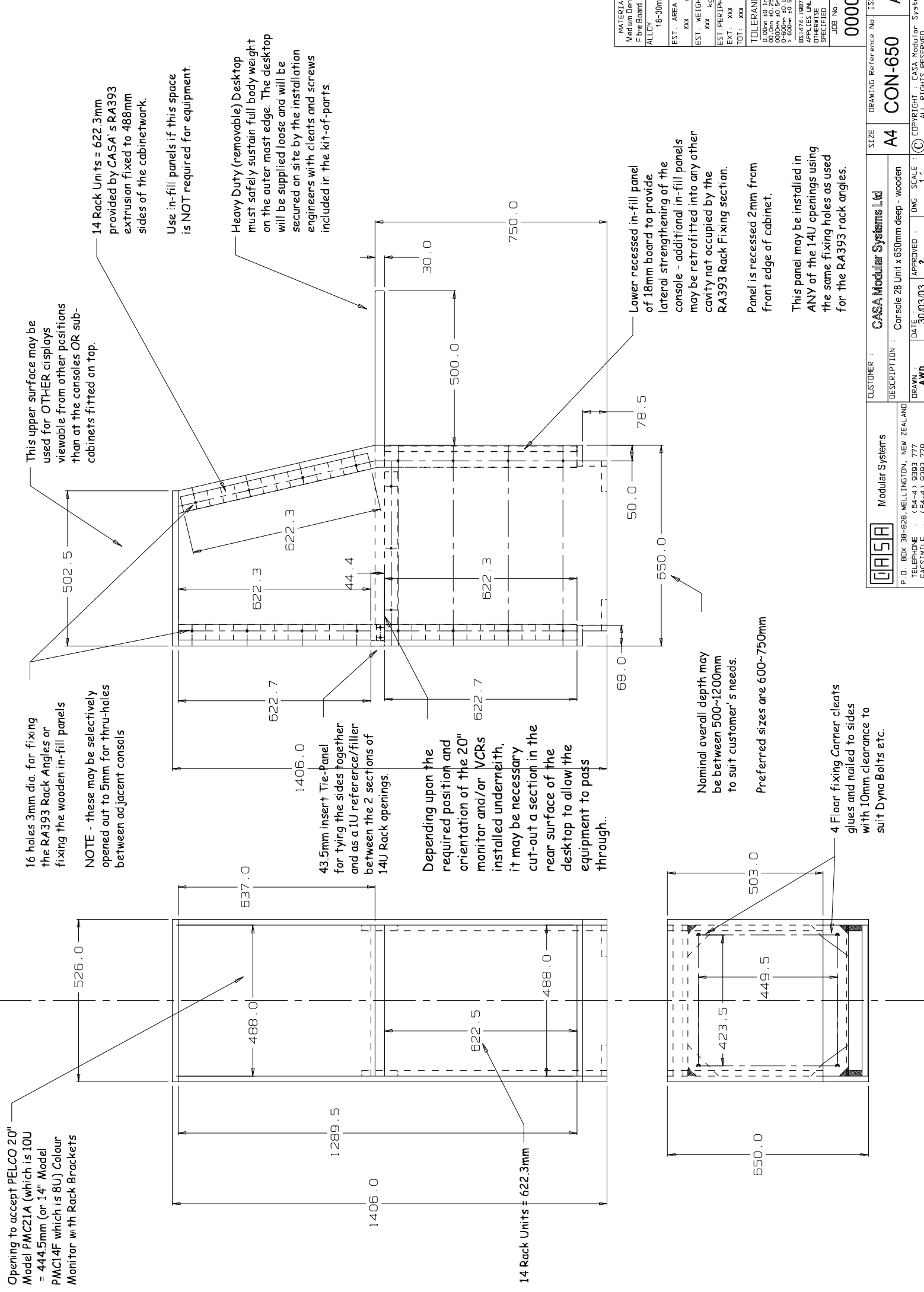
NOTE - these may be selectively opened out to 5mm for thru-holes between adjacent consoles

This upper surface may be used for OTHER displays viewable from other positions than at the consoles OR sub-cabinets fitted on top.

14 Rack Units = 622.3mm provided by CASA's RA393 extrusion fixed to 488mm sides of the cabinetwork.

Use in-fill panels if this space is NOT required for equipment.

Heavy Duty (removable) Desktop must safely sustain full body weight on the outer most edge. The desktop will be supplied loose and will be secured on site by the installation engineers with cleats and screws included in the kit-of-parts.



MATERIAL Medium Density Fibre Board	EST. AREA 18-30mm	EST. WEIGHT kg/m ²	EST PERIPHERY mm	TOLERANCE 0.00mm to 1mm
ALLOY				0.00mm to 25mm
				25.00mm to 50mm
				50.00mm to 100mm
				100.00mm to 200mm
				200.00mm to 300mm
				300.00mm to 400mm
				400.00mm to 500mm
				500.00mm to 600mm
				600.00mm to 700mm
				700.00mm to 800mm
				800.00mm to 900mm
				900.00mm to 1000mm
				1000.00mm to 1100mm
				1100.00mm to 1200mm
				1200.00mm to 1300mm
				1300.00mm to 1400mm
				1400.00mm to 1500mm
				1500.00mm to 1600mm
				1600.00mm to 1700mm
				1700.00mm to 1800mm
				1800.00mm to 1900mm
				1900.00mm to 2000mm
				2000.00mm to 2100mm
				2100.00mm to 2200mm
				2200.00mm to 2300mm
				2300.00mm to 2400mm
				2400.00mm to 2500mm
				2500.00mm to 2600mm
				2600.00mm to 2700mm
				2700.00mm to 2800mm
				2800.00mm to 2900mm
				2900.00mm to 3000mm
				3000.00mm to 3100mm
				3100.00mm to 3200mm
				3200.00mm to 3300mm
				3300.00mm to 3400mm
				3400.00mm to 3500mm
				3500.00mm to 3600mm
				3600.00mm to 3700mm
				3700.00mm to 3800mm
				3800.00mm to 3900mm
				3900.00mm to 4000mm
				4000.00mm to 4100mm
				4100.00mm to 4200mm
				4200.00mm to 4300mm
				4300.00mm to 4400mm
				4400.00mm to 4500mm
				4500.00mm to 4600mm
				4600.00mm to 4700mm
				4700.00mm to 4800mm
				4800.00mm to 4900mm
				4900.00mm to 5000mm
				5000.00mm to 5100mm
				5100.00mm to 5200mm
				5200.00mm to 5300mm
				5300.00mm to 5400mm
				5400.00mm to 5500mm
				5500.00mm to 5600mm
				5600.00mm to 5700mm
				5700.00mm to 5800mm
				5800.00mm to 5900mm
				5900.00mm to 6000mm
				6000.00mm to 6100mm
				6100.00mm to 6200mm
				6200.00mm to 6300mm
				6300.00mm to 6400mm
				6400.00mm to 6500mm
				6500.00mm to 6600mm
				6600.00mm to 6700mm
				6700.00mm to 6800mm
				6800.00mm to 6900mm
				6900.00mm to 7000mm
				7000.00mm to 7100mm
				7100.00mm to 7200mm
				7200.00mm to 7300mm
				7300.00mm to 7400mm
				7400.00mm to 7500mm
				7500.00mm to 7600mm
				7600.00mm to 7700mm
				7700.00mm to 7800mm
				7800.00mm to 7900mm
				7900.00mm to 8000mm
				8000.00mm to 8100mm
				8100.00mm to 8200mm
				8200.00mm to 8300mm
				8300.00mm to 8400mm
				8400.00mm to 8500mm
				8500.00mm to 8600mm
				8600.00mm to 8700mm
				8700.00mm to 8800mm
				8800.00mm to 8900mm
				8900.00mm to 9000mm
				9000.00mm to 9100mm
				9100.00mm to 9200mm
				9200.00mm to 9300mm
				9300.00mm to 9400mm
				9400.00mm to 9500mm
				9500.00mm to 9600mm
				9600.00mm to 9700mm
				9700.00mm to 9800mm
				9800.00mm to 9900mm
				9900.00mm to 10000mm

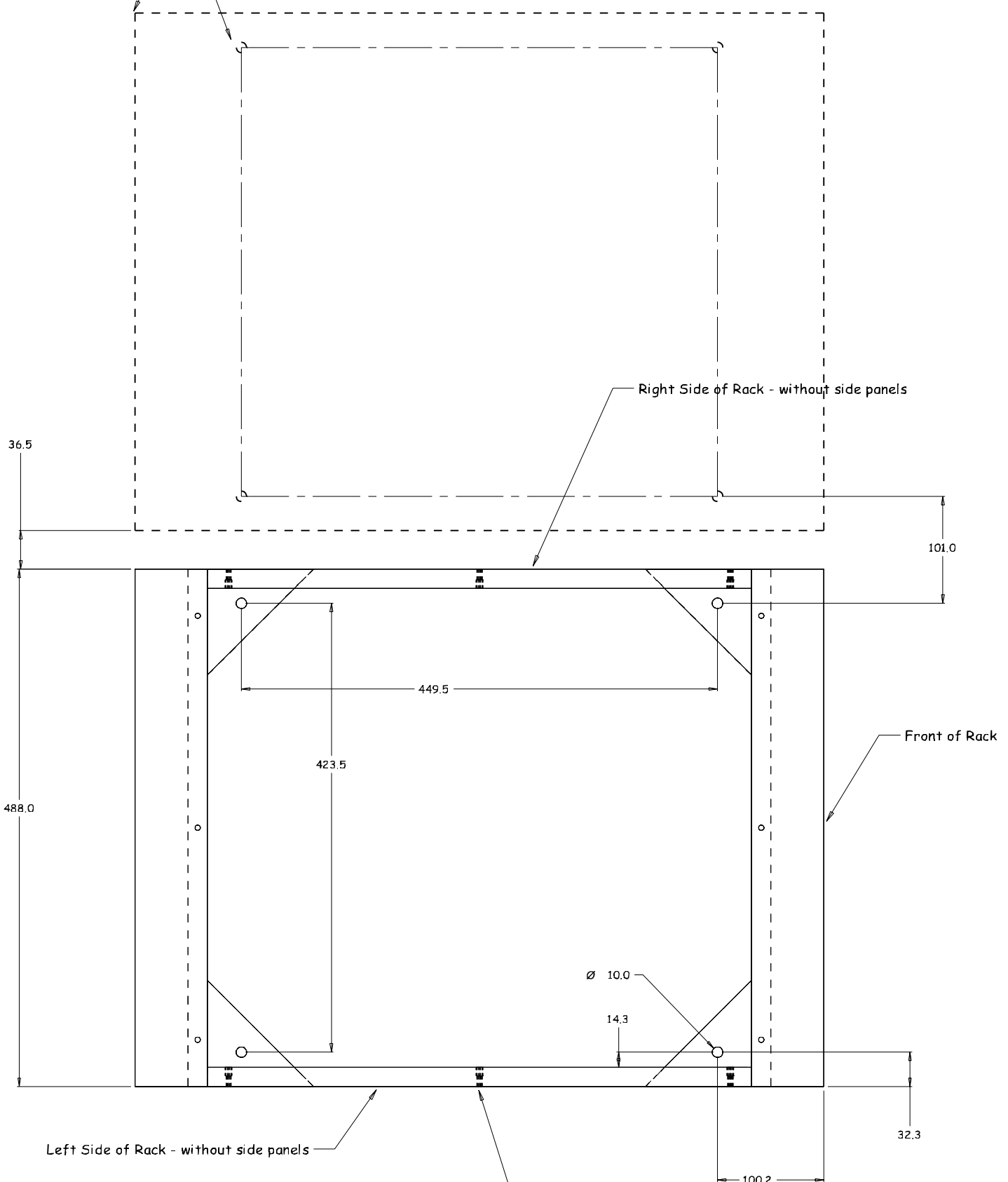
CUSTOMER : Modular Systems	ISSUE 0000
DESCRIPTION : Console 28 Unit x 650mm deep - wooden	DRAWING Reference No. A4 CON-650
DRAWN : AWD	DATE : 30/03/03
APPROVED : ?	DWG. SCALE : 1:1
CASA Modular Systems Ltd P.O. BOX 38-828 WELLINGTON, NEW ZEALAND TELEPHONE : (64-4) 9393 777 FACSIMILE : (64-4) 9393 778	
COPYRIGHT : CASA Modular Systems ALL RIGHTS RESERVED	

Typical Floor fixing details for CASA Rack Consol - 650mm deep

Typical fixing locatiuon for adjacent Rack or Consol

NOTES

- 1 - Use heavy duty 25~28mm diameter washers under the heads of the floor fixing bolts/coach screws
- 2 - Refer to installation instructions for further details and recommendations



TYPICAL FLOOR LAYOUT - 650mm