

Opening to accept PELCO 20" Model PMC21A (which is 10U = 444.5mm (or 14" Model PMC14F which is 8U) Colour Monitor with Rack Brackets

16 holes 3mm dia. for fixing the RA393 Rack Angles or fixing the wooden in-fill panels

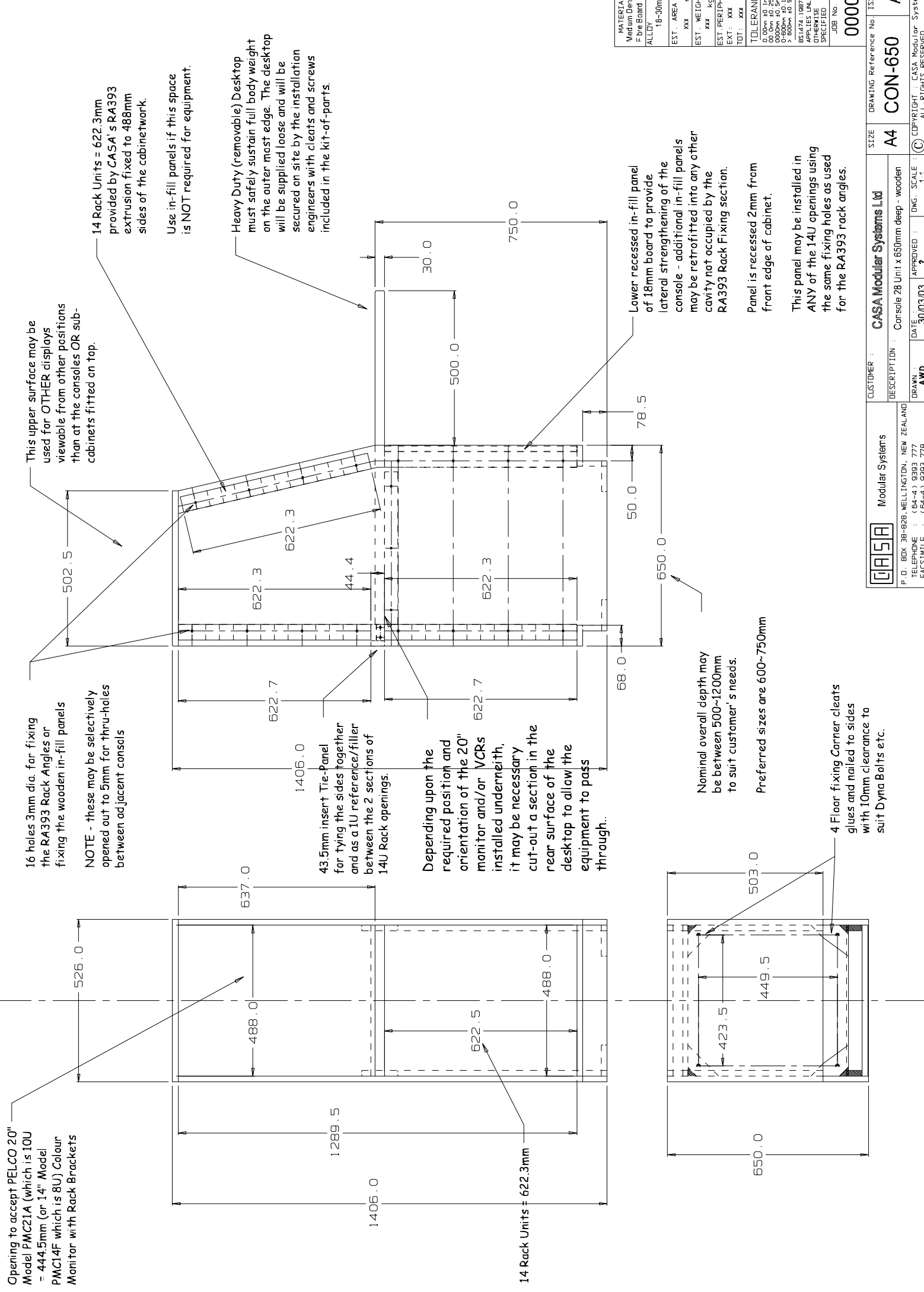
NOTE - these may be selectively opened out to 5mm for thru-holes between adjacent consoles

This upper surface may be used for OTHER displays viewable from other positions than at the consoles OR sub-cabinets fitted on top.

14 Rack Units = 622.3mm provided by CASA's RA393 extrusion fixed to 488mm sides of the cabinetwork.

Use in-fill panels if this space is NOT required for equipment.

Heavy Duty (removable) Desktop must safely sustain full body weight on the outer most edge. The desktop will be supplied loose and will be secured on site by the installation engineers with cleats and screws included in the kit-of-parts.



43.5mm insert Tie-Panel for tying the sides together and as a 1U reference/filler between the 2 sections of 14U Rack openings.

Depending upon the required position and orientation of the 20" monitor and/or VCRs installed underneath, it may be necessary cut-out a section in the rear surface of the desktop to allow the equipment to pass through..

Nominal overall depth may be between 500~1200mm to suit customer's needs.

Preferred sizes are 600~750mm

4 Floor fixing Corner cleats glued and nailed to sides with 10mm clearance to suit Dyna Bolts etc.

Lower recessed in-fill panel of 18mm board to provide lateral strengthening of the console - additional in-fill panels may be retrofitted into any other cavity not occupied by the RA393 Rack Fixing section.

Panel is recessed 2mm from front edge of cabinet.

This panel may be installed in ANY of the 14U openings using the same fixing holes as used for the RA393 rack angles.

MATERIAL Medium Density Fibre Board ALLOY	EST. AREA 18-30mm xxx mm	EST. WEIGHT xxx kg/m	EST PERIPHERY xxx mm	EXT. : xxx mm	TOT. : xxx mm
TOLERANCE 0.00mm to 1mm 00.00mm to 25mm 0.00mm to 1mm 0-800mm to 1mm > 800mm to 5mm					
BS1474:1987 APPLIES UNLESS OTHERWISE SPECIFIED					
JOB NO. 0000					

CUSTOMER : CASA Modular Systems Ltd	SIZE A4	DRAWING Reference No. CON-650	ISSUE A
DESCRIPTION : Console 28 Unit x 650mm deep - wooden	DATE 30/03/03	APPROVED : AWD	DWG. SCALE : 1:1
Modular Systems P.O. BOX 38-828 WELLINGTON, NEW ZEALAND TELEPHONE : (64-4) 9393 777 FACSIMILE : (64-4) 9393 778	DRAWN : AWD	APPROVED : 7	ALL RIGHTS RESERVED