

**Bauweise für elektronische Einrichtungen**  
**Frontplatten und Gestelle**  
**Maße**

**DIN**  
**41 494**  
 Blatt 1

Panel mounting racks for electronic equipments; racks and panels, dimensions

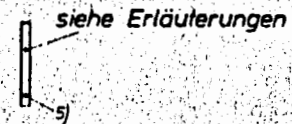
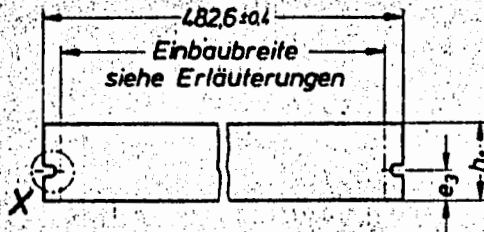
Ersatz für DIN 41 494

Maße in mm

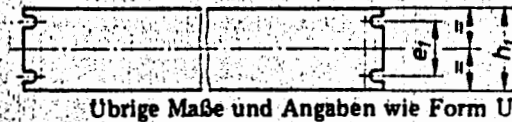
Nicht angegebene Einzelheiten sind zweckentsprechend zu wählen.

**1. Frontplatten<sup>1)</sup>**

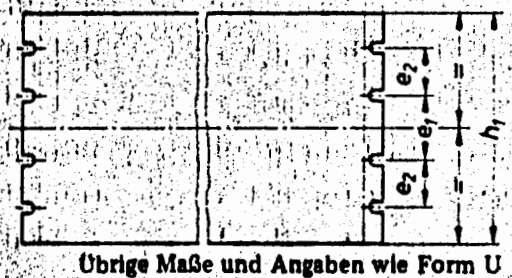
Form U



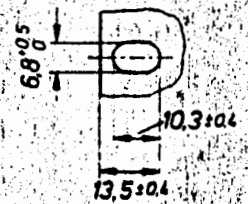
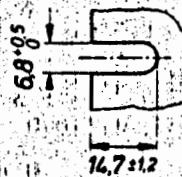
Form V



Form W



Einzelheit X  
 (nach Wahl des Herstellers)



Größe 4)	Form	$h_1$ 0 -0,8	$e_1$ 2)	$e_2$ 2)	$e_3$ 2)
1 3)	U	43,6	—	—	5,9
1	V	43,6	31,75	—	—
2	U	88,1	—	—	37,7
2 3)	V	88,1	76,2	—	—
3	V	132,5	57,15	—	—
4	V	177	101,6	—	—
5	V	221,5	146,1	—	—
6	W	265,9	76,2	57,15	—
6 3)	V	265,9	190,5	—	—
7	W	310,3	57,15	88,9	—
8	W	354,8	76,2	101,6	—
9	W	399,2	120,6	101,6	—
10	W	443,7	165,1	101,6	—
11	W	488,1	146,1	133,3	—
12	W	532,6	190,6	133,3	—

- 1) Für Baugruppenträger und Einschübe nach diesen Frontplattenabmessungen ist ein weiteres Blatt dieser Norm in Vorbereitung
- 2) Zulässige Abweichungen beliebiger Teilungen zueinander:  $\pm 0,4$ .
- 3) Wahlweise Ausführungen.
- 4) Die Größe ergibt sich aus dem Teilungsmaß 44,45 mm.
- 5) Für die Einbautiefe ist DIN 41 488 Blatt 1 zu beachten.

Fortsetzung Seite 2 und 3  
 Erläuterungen Seite 3 und 4

Deutsche Elektrotechnische Kommission · Fachnormenausschuß Elektro-  
 technik im DNA gemeinsam mit Vorschriftenausschuß des VDE

Frühere Ausgaben:  
 DIN 41 494: 4.63

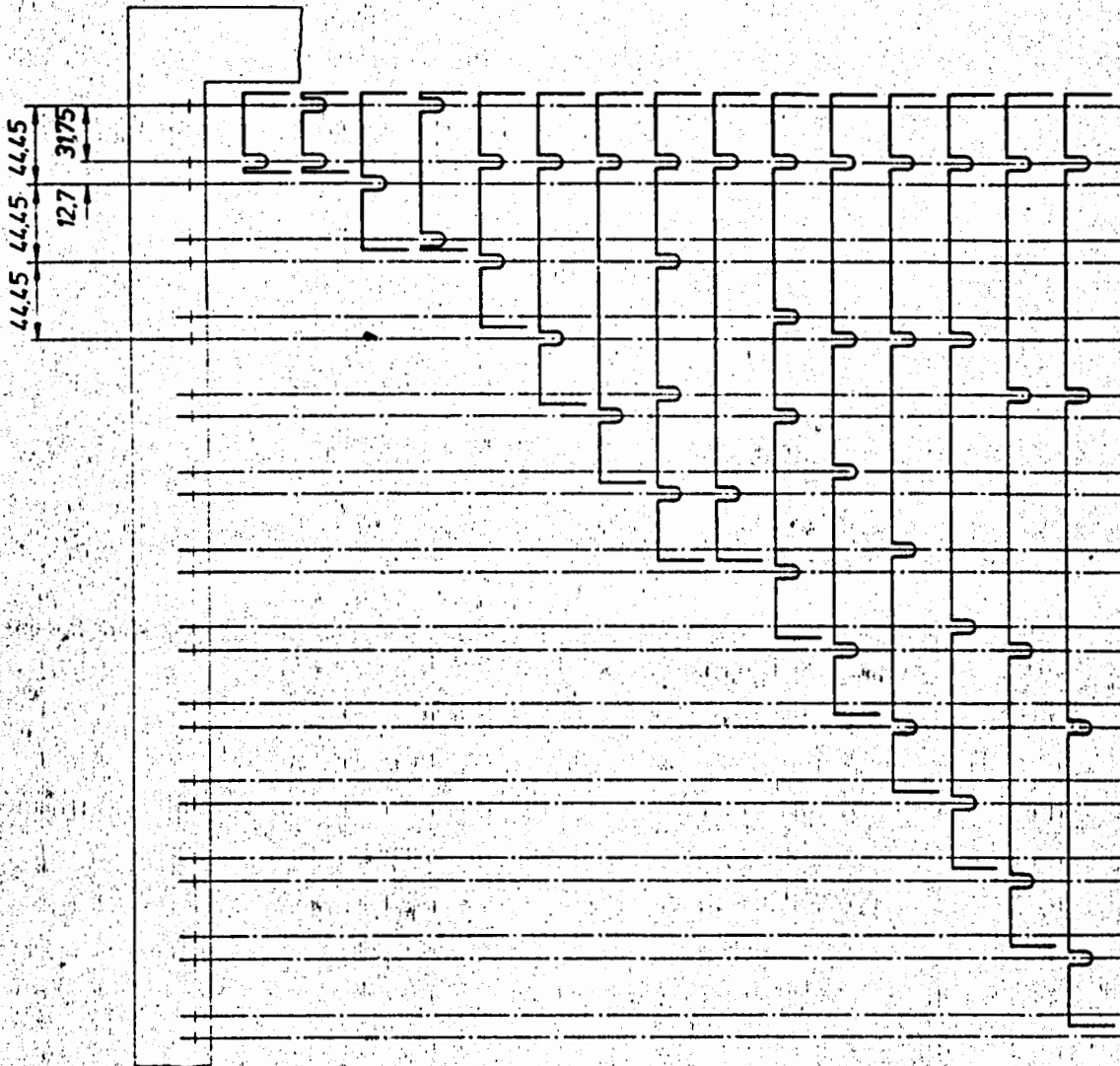
Nachdruck, auch auszugsweise, ist ohne Genehmigung des Deutschen Normenausschusses, Berlin, gestattet.

DEVER & ASSOCIATES  
 WILMINGTON  
 REC. AUG 1984

Änderung September 1974:  
 (N 41 494 in DIN 41 494 Blatt 1 geändert.  
 Inhalt vollständig überarbeitet, siehe Erläuterungen.)

Frontplattenbefestigung <sup>1)</sup>

Größe														
1	1	2	2	3	4	5	6	6	7	8	9	10	11	12
Form														
U	V	U	V	V	V	V	W	V	W	W	W	W	W	W



<sup>1)</sup> Siehe Seite 1.

~~DIMENSIONS DES PANNEAUX~~  
~~ET RACKS~~  
~~POUR APPAREILS ÉLECTRONIQUES~~  
~~NUCLÉAIRES~~

**DIMENSIONS OF PANELS AND RACKS**  
**[FOR NUCLEAR ELECTRONIC INSTRUMENTS]**

~~Domaine d'application~~

**1. Scope**

~~La présente recommandation s'applique aux~~  
~~panneaux et aux racks pour les appareils~~  
~~électroniques de mesure utilisés en relation avec~~  
~~les rayonnements ionisants.~~

This Recommendation applies to panels and racks for electrical measuring instruments used in connection with ionizing radiation.

~~Note. — Voir l'explication donnée dans le préface au~~  
~~présent rapport sur l'application de cette~~  
~~recommandation et aux données utilisées dans d'autres~~  
~~normes de l'IEC de l'instrumentation~~  
~~nucléaire.~~

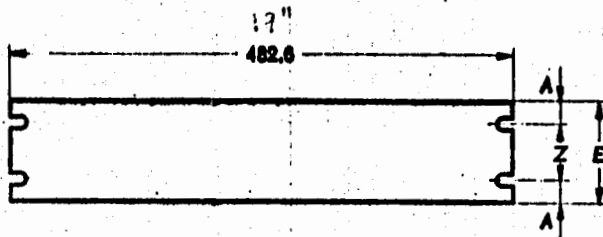
Note. — See explanation given in the Preface regarding the applicability of this Recommendation to racks and panels used for other purposes than nuclear instrumentation.

~~Valeurs recommandées des dimensions~~

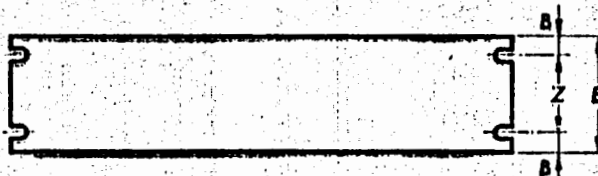
**2. Standard values for panel dimensions**

~~Recommandations des dimensions~~

See Clause 4 for tolerances.



~~ou alternativement~~ / Or alternatively



Dimension Size	E	Z
2 U	88.1	76.2
1 U	43.7	31.75

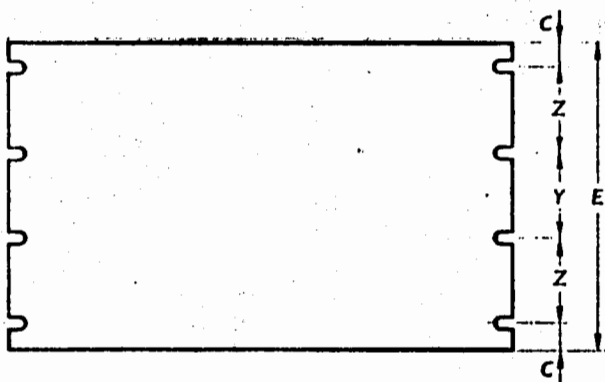
Ou / Or

Dimension Size	E	Z
2 U	88.1	37.7

Dimension Size	E	Z
3 U	132.5	57.1
4 U	177.0	101.6
5 U	221.5	146.0

Dimensions in millimetres.

(Continued on page 7)



Dimension Size	E	Z	Y
6 U	265.9	57.1	76.2

Dimensions in millimetres.

Sur le panneau 6 U, les deux échancrures centrales sont facultatives.

For the 6 U panel, the two centre slots are optional.

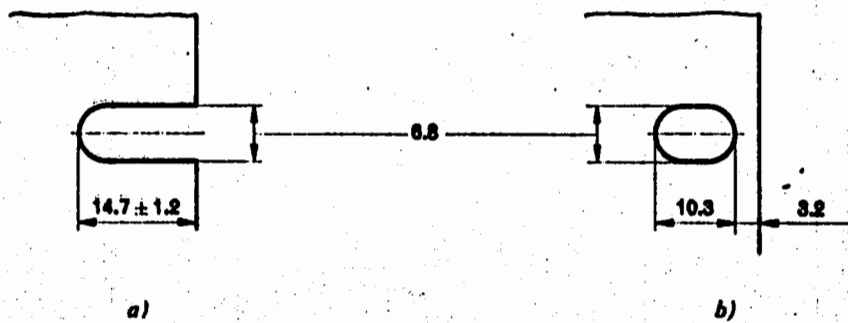
Les dimensions A, B et C entre le centre des échancrures et le bord des panneaux se déduisent des dimensions indiquées pour E, Z et Y.

The dimensions A, B and C between slot centres and panel edges are determined from the given dimensions E, Z and Y.

FIG. 1. — ~~Panneaux~~  
Panels.

~~3. Détails des échancrures~~

3. Slot details



- a) ~~forme habituelle~~  
usual shape
- b) ~~forme habituelle~~  
alternative for special applications

~~Dimensions en millimètres.~~

Dimensions in millimetres.

FIG. 2. — ~~Détails des échancrures.~~  
Slot details.

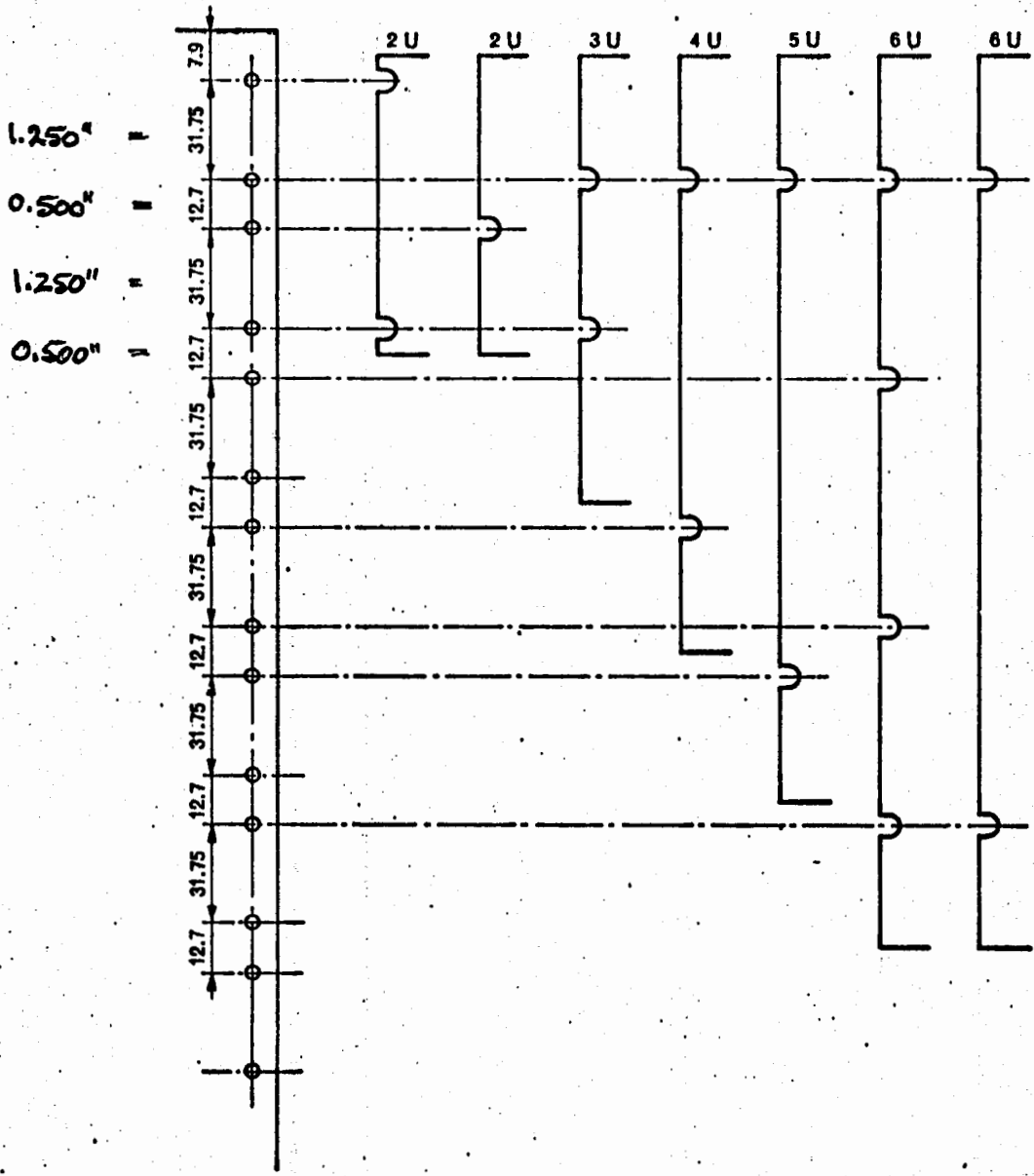


FIG. 3. — XXXXXXXXXXXXXXXXXXXX  
 Vertical spacing of mounting holes.

\_\_\_\_\_

~~Dimensions~~

4. Tolerances

4.1 ~~Between any two slots~~  $\pm 0.4$  mm  
(tolerance not to be cumulative).

4.1 Between any two slots  $\pm 0.4$  mm (tolerance not to be cumulative).

4.2 ~~For all dimensions~~  $\pm 0.4$  mm  
except where otherwise specified.

4.2 For all dimensions:  $\pm 0.4$  mm, except where otherwise specified.

~~Standard values for rack dimensions~~

5. Standard values for rack dimensions

5.1 ~~Horizontal rack opening~~

5.1 Horizontal rack opening

EIA Std RS-310

~~Dimension: 449.3 mm~~

Dimension: 449.3 mm

450.85 mm (17.75")

~~Tolerance:  $\pm 1.6$  mm~~

Tolerance:  $\pm 1.6$  mm

$\pm 1.575$  mm ( $\pm 0.062$ ")

5.2 ~~Horizontal spacing of mounting holes in racks~~

5.2 Horizontal spacing of mounting holes in racks

~~Dimension: 465.1 mm~~

Dimension: 465.1 mm

465.12 mm (18.312")

~~Tolerance:  $\pm 1.6$  mm~~

Tolerance:  $\pm 1.6$  mm

$\pm 1.575$  mm ( $\pm 0.062$ ")

5.3 ~~Vertical spacing of mounting holes in racks~~

5.3 Vertical spacing of mounting holes in racks

a) ~~Between first hole and either top or bottom:~~

a) Between first hole and either top or bottom:

~~Dimension: 7.9 mm~~

Dimension: 7.9 mm

7.9248 mm (0.312")

~~Tolerance:  $\pm 0.8$  mm~~

Tolerance:  $\pm 0.8$  mm

$\pm 0.381$  mm ( $\pm 0.018$ ")

b) ~~Then, between successive holes:~~

b) Then, between successive holes:

~~Dimension: 31.75 mm~~

Dimension: 31.75 mm

~~12.7 mm~~

12.7 mm

~~31.75 mm~~

31.75 mm

etc.

~~Tolerance between any two holes:  $\pm 0.4$  mm~~  
(tolerance not to be cumulative).

Tolerance between any two holes:  $\pm 0.4$  mm  
(tolerance not to be cumulative).

$\pm 0.381$  mm ( $\pm 0.018$ ")

~~Additional holes are permitted.~~

Additional holes are permitted.