

Unsupported collet knobs $\frac{7}{8}$ in. (6.35 mm) dia. shaft

Supported collet knobs $\frac{7}{8}$ in. (6.35 mm) dia. shaft

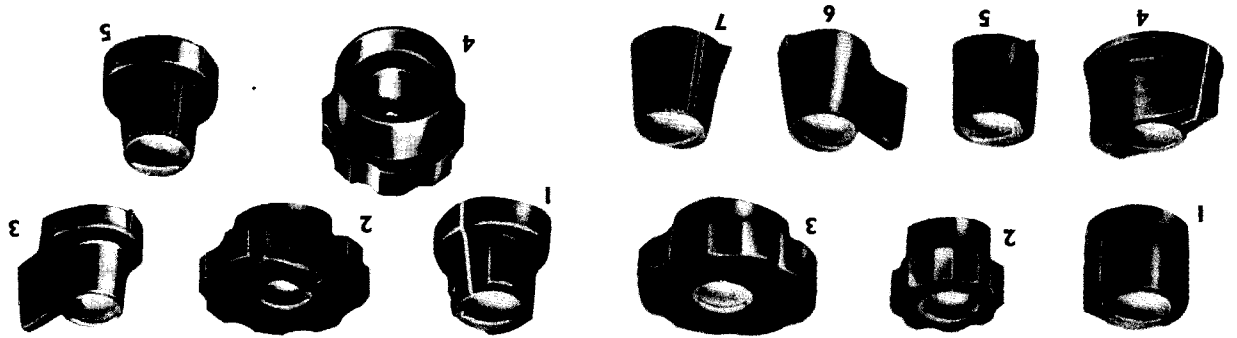
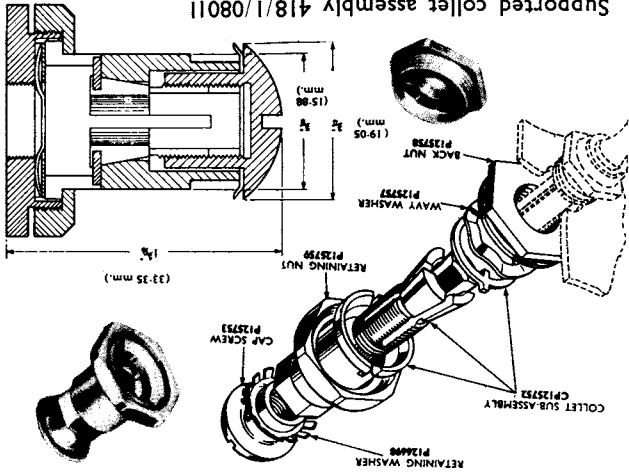
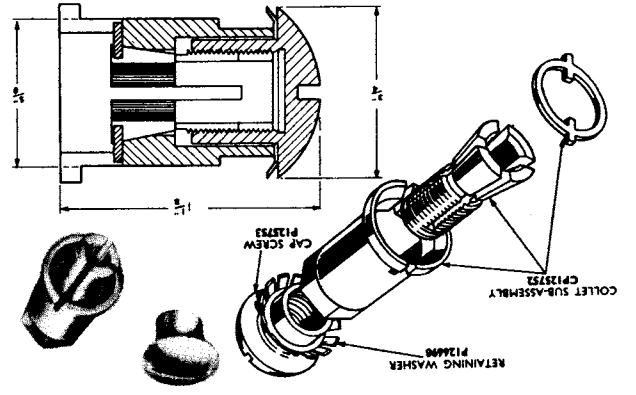


Photo No.	Description	DEF Part No.	5221 Part No.	Shape similar to Fig.	Joint Services Catalogue No. 5355-99-942-
1	Parallel, with in-dicator line $1\frac{1}{8}$ in. (28.58 mm) dia.	39	418/2/09027	1	8683
2	Fluted, $\frac{1}{8}$ in. (7.95 mm) dia.	32	418/2/09020	2	8674
3	Fluted, $2\frac{1}{2}$ in. (57.15 mm) dia.	30	418/2/09018	3	8677
4	Parallel, with in-dicator line, $1\frac{1}{2}$ in. (34.45 mm) dia.	38	418/2/09026	4	8685
5	Fluted, with beak, 1 in. (25.4 mm) dia. and tail, $1\frac{1}{2}$ in. (31.75 mm) from axis	36	412/2/09024	5	8667
7	Serrated, with beak 1 in. (25.4 mm) dia.	34	418/2/09022	7	8690
—	Unsupported collet assembly	29	418/1/08010	—	8697

Photo No.	Description	DEF Part No.	5221 Part No.	Shape similar to Fig.	Joint Services Catalogue No. 5355-99-
1	Parallel, with in-dicator line $1\frac{1}{8}$ in. (33.35 mm) dia.	56	418/2/09040	1	8684
2	Fluted, $2\frac{1}{2}$ in. (57.15 mm) dia. (with quick wind)	—	418/1/07516	—	943-9871
3	Conical, with beak and tail, $1\frac{1}{8}$ in. (33.35 mm) dia.	52	418/2/09037	3	8668
4	Fluted, $1\frac{1}{2}$ in. (41.28 mm) (from axis) tail $1\frac{1}{4}$ in. (31.75 mm)	45	418/2/09032	4	8675
5	Serrated, with beak 1 in. (25.4 mm) dia. (max. dia. $1\frac{1}{16}$ in. (33.35 mm.))	50	418/2/09035	5	8692
—	Supported collet assembly	43	418/1/08011	—	942-8698



Unsupported collet assembly 418/1/08010 (JS Cat. No. 5355-99-942-8697)

Supported collet assembly 418/1/08011 (JS Cat. No. 5355-99-942-8698) Available as complete assembly only