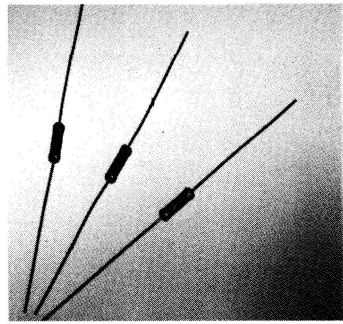


# fixed resistors

## metal film-lacquered

MR24E/C/D MR34E/C/D  
MR54E/C/D MR74E/C/D

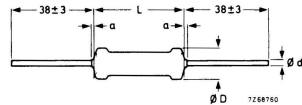
These resistors are intended for demanding applications where MIL-STD is required. They meet MIL-R-10509F in all respects and can be supplied with tolerances down to 0,1% and, to special order, in non-standard resistance values.



Resistance ranges	from 10 Ω to 1 MΩ, E96, E192 series	
Resistance tolerances	0,1 0,25 0,5 1%	
Rated dissipation at $T_{amb} = 125^{\circ}C$	MR24E/C	0,1 W
	MR34E/C	0,125 W
	MR54E/C	0,25 W
	MR74E/C	0,5 W
at $T_{amb} = 70^{\circ}C$	MR24D	0,125 W
	MR34D	0,25 W
	MR54D	0,5 W
	MR74D	0,75 W
Basic specification	MIL-R-10509F	
Stability after load	$\Delta R/R$ max. 0,5% +0,05 Ω	

style	max. voltage	rated dissipation	resistance range and tolerance	maximum temperature coefficient ppm/°C	MIL style	style code
V(r.m.s.) W						
at 125 °C						
			0,1/0,25/0,5% E192 series	±		
			1% E96 series			
MR24E	200	0,1	49,9 Ω–100 kΩ	25	RN55E	160
MR24C	200	0,1	49,9 Ω–100 kΩ	50	RN55C	161
MR34E	250	0,125	49,9 Ω–499 kΩ	25	RN60E	163
MR34C	250	0,125	49,9 Ω–499 kΩ	50	RN60C	164
MR54E	300	0,25	49,9 Ω– 1 MΩ	25	RN65E	166
MR54C	300	0,25	49,9 Ω– 1 MΩ	50	RN65C	167
MR74E	350	0,5	24,9 Ω– 1 MΩ	25	RN70E	169
MR74C	350	0,5	24,9 Ω– 1 MΩ	50	RN70C	170
at 70 °C						
			1% E96 series	±		
MR24D	200	0,125	10 Ω–301 kΩ	100	RN55D	162
MR34D	300	0,25	10 Ω– 1 MΩ	100	RN60D	165
MR54D	350	0,5	10 Ω– 1 MΩ	100	RN65D	168
MR74D	500	0,75	10 Ω– 1 MΩ	100	RN70D	171

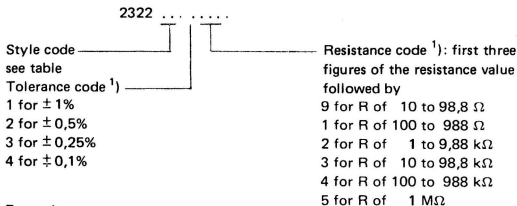
style	$D_{max}$	$L_{max}$	d	$a_{max}$
MR24 E/C/D	2,5	6,5	0,6	1
MR34 E/C/D	3,1	10,5	0,6	1
MR54 E/C/D	5,2	16,5	0,6	1
MR74 E/C/D	6,8	20,5	0,8	1



Marking: (to MIL-R-10509 F)

Each resistor is marked with:  
MIL style  
value and tolerance in MIL code  
manufacturers' identification symbol

### Composition of the catalogue no.



Example  
Style MR24E, 261 kΩ, 0,25%; catalogue no. 2322 160 32614.

<sup>1)</sup> Where following values occur, use numbers shown below.

value Ω	last 5 digits of the catalogue no.			
	0,1%	0,25%	0,5%	1%
29,9	92102	92122		
39,9	92103	92123		
49,9	92104	92124	92134	92144
59,9	92105	92125		
69,9	92106	92126		
79,9	92107	92127		
89,9	92108	92128		
99,9	92109	92129		