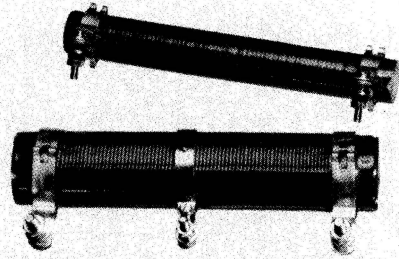


fixed resistors

wirewound

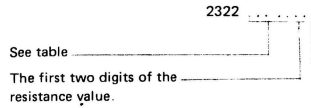
2322 321 to 324 MAINTENANCE TYPES
fixed or adjustable, with side terminals



Rated dissipation; $T_{amb} = 40^{\circ}C$ mounted on metal plate	P, see table 1,2 P
Temperature coefficient	-50 to +140 ppm/ $^{\circ}C$
Climatic category IEC 68	55/155/56

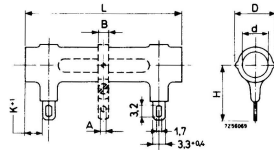
P	coating	resistance range	tolerance	catalogue no.	
				2322 followed by fixed	adjustable
W			%		
8	cement	1 Ω - 100 Ω	10	323 14 ...	-
		110 Ω - 150 Ω	5	323 34 ...	-
10	enamel	160 Ω - 6,8 k Ω	5	321 34 ...	-
		30 Ω - 300 Ω	5	323 12 ...	324 12 ...
16	cement	330 Ω - 12 k Ω	5	323 32 ...	324 32 ...
		330 Ω - 3,3 k Ω	5	321 32 ...	-
25	enamel	330 Ω - 3,3 k Ω	5	-	322 32 ...
		1,5 Ω - 2,7 Ω	10	323 10 ...	324 10 ...
40	cement	3 Ω - 620 Ω	5	323 30 ...	324 30 ...
		680 Ω - 24 k Ω	5	321 30 ...	-
60	enamel	680 Ω - 6,8 k Ω	5	-	322 30 ...
		2,7 Ω - 15 Ω	10	323 08 ...	324 08 ...
100	cement	16 Ω - 820 Ω	5	323 28 ...	324 28 ...
		1 k Ω - 39 k Ω	5	321 28 ...	-
160	enamel	1 k Ω - 9,1 k Ω	5	-	322 28 ...
		4,7 Ω - 1,6 k Ω	5	323 26 ...	324 26 ...
250	cement	1,8 k Ω - 75 k Ω	5	321 26 ...	-
		1,8 k Ω - 18 k Ω	5	-	322 26 ...
60	enamel	3 Ω - 2,2 k Ω	5	323 24 ...	324 24 ...
		2,4 k Ω - 68 k Ω	5	321 24 ...	-
100	cement	2,4 k Ω - 24 k Ω	5	-	322 24 ...
		6,8 Ω - 4,3 k Ω	5	323 23 ...	324 23 ...
160	enamel	4,7 k Ω - 120 k Ω	5	321 23 ...	-
		4,7 k Ω - 47 k Ω	5	-	322 23 ...
250	cement	10 Ω - 47 k Ω	5	323 22 ...	324 22 ...
		16 Ω - 11 k Ω	5	323 21 ...	324 21 ...

Composition of the catalogue no.

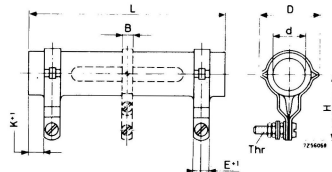


- 8 for R of 1 to 8,2 Ω
- 9 for R of 10 to 82 Ω
- 1 for R of 100 to 820 Ω
- 2 for R of 1 to 8,2 k Ω
- 3 for R of 10 to 82 k Ω
- 4 for R of 100 to 120 k Ω

P \leq 40 W



P \geq 60 W



P	L _{max}	D _{max}	d _{min}	K	H	E	B	A	thread
8	26	11,5	5	2,5	14	-	-	-	-
10	41	11,5	4,2	4	14	-	5	2,8	-
16	62	11,5	4,2	4	14	-	5	2,8	-
25	64	16	7,2	4	20	-	6	3,2	-
40	103	16	7,2	4	20	-	6	3,2	-
60	103	32	12,5	6	33	8,5	6	-	M4
100	165	32	12,5	6	33	8,5	6	-	M4
160	165	44	20	8	40	10	8	-	M5
250	256	44	20	8	40	10	8	-	M5