

THIS DEVICE COMPLIES WITH PART 15 OF THE FCC RULES. OPERATION IS SUBJECT TO THE FOLLOWING TWO CONDITIONS
(1) THIS DEVICE MAY NOT CAUSE HARMFUL INTERFERENCE, AND
(2) THIS DEVICE MUST ACCEPT ANY INTERFERENCE RECEIVED, INCLUDING INTERFERENCE THAT MAY CAUSE UNDESIRABLE OPERATION

Contents

Introduction.....	3
Specifications	3
Precautions.....	4
System Requirements.....	4
Package Content	4
Product Overview	5
1. Use as External USB HDD.....	7
1.1 Insert Hard Disk.....	7
1.2 Format Built-in HDD via USB	8
1.2.1 Windows 98SE, ME.....	8
1.2.2 Windows 2000.....	10
1.2.3 Windows XP	12
1.3 Copy Data via USB	14
1.3.1 Windows 98SE.....	14
1.3.2 Windows ME.....	15
1.3.3 Windows 2000, XP	16
1.3.4 Linux	17
1.3.5 Mac	17
2. Access PC via Network.....	18
2.1 Connect LAN Cable	18
2.2 Set Network Configurations	18
2.2.1 Windows 98SE, ME.....	19
2.2.2 Windows 2000.....	21
2.2.3 Windows XP	24
3. Use as Multimedia Player	28
3.1 Connect to External AV Device	28
3.1.1 Connect Video Cable	28

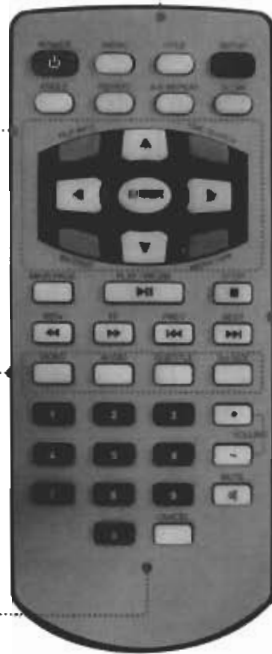
3.9 Remote Controls

This is guide for basic use of remote control. For more details, '3.3 Basic Screen Menu', '3.4 Play Video Files', '3.5 Play DVD Files', '3.6 Play Music Files', '3.7 Play Photo Files', '3.8 Make a Play-List'.

- POWER** Turn On / Off **SETUP** Go to Setup Screen
- MENU** Go to DVD Main Menu, Display Menu Icon When Playing Video File
- TITLE** Go to DVD Title Menu **ANGLE** DVD Angle, Photo Rotation
- REPEAT** Set DVD Chapter, Title Repeat **A-B REPEAT** Set DVD A-B Repeat
- SLOW** Play DVD Slowly

- ENTER** Play a File
- ▲▼◀▶** Arrow Key (◀: Return to Up Directory)
- FILE INFO** Show File Info
- TIME SEARCH** Jump to Specific play time
- Brightness** Set Luminosity, Color Depth, Brightness
- MEDIA TYPE** Go to Media Type Selection Screen

- VIDEO** Change Video Output Mode
- AUDIO** Change Audio Type of Video, DVD file
- SUBTITLE** Subtitle Settings
- Scr. SIZE** Screen Size Settings



- MAIN PAGE** Go to Mode Selection Screen
- PLAY/PAUSE** Play next all files
Pause
- STOP** Stop Play
- REW** Play Faster in Backward
- FF** Play Faster in Forward
- PREV** Go to Previous Page
Play Previous File in Play All
- NEXT** Go to Next Page
Play Next File in Play All

How to Insert/Change Battery

1. Pull off the battery tray for remote controller's body completely. 2. Put the enclosed battery on the tray. 3. Insert the tray into remote controller's body completely.



Introduction

MediaGate MG-35 is brand-new digital multimedia player supporting dual data access mode via 3.5" HDD inside and 10/100Mbps Network. Easily enjoy Digital Movie, Digital Music, Digital Photo data of 3.5" HDD inside and Networking PC's hard disk drive on your TV.

- Dual Data Access Mode via 10/100Mbps LAN and 3.5" HDD inside
- Digital Multimedia Player via Home TV or Car TV
- USB 2.0 External Storage via PC(NTFS, FAT32)
- Audio - Stereo, Digital Coaxial & Optical 5.1ch. Sound
- Video - Composite, S-Video, HD Component 480p, 720p, 1080i
- DVD Manager - Playback of DVD File same as Original DVD Title
- Easy Firmware Upgrade.

Specifications

Product Name		MediaGate MG-35
Power		5V 1.5A / 12V 1.5A
Weight		450g (without HDD)
Dimension		57 x 150 x 185 mm
Available OS		Windows 98/SE/ME/2000/XP, Mac OS 9.0 Higher, Linux 2.4 Higher
USB Interface		480Mbps USB 2.0 (USB 1.1 Compatible) / Slave
Network Interface		10/100 Mbps LAN (RJ-45)
HDD Type		3.5" IDE HDD
HDD File System		NTFS / FAT32
TV Type		NTSC / PAL
Supported Format	Movie	MPEG 1, 2, 4 (MPG, MPEG, AVI, M2V, DAT, VOB, IFO etc.) DivX, XviD (except GMC, Qpel option applied)
	Music	MP3, OGG Vorbis, WAV, WMA (except WMA9 pro.lossless)
	Photo	JPG(JPEG)
Video Output		COMPOSITE S-VIDEO COMPONENT Y, Pb, Pr (480p, 720p, 1080i Progressive Scan)
Audio Output		STEREO L-R DIGITAL COAXIAL, OPTICAL (DTS Pass-Through Only)
External IR		Support (Optional)
Working Temperature		0°C ~ 60°C
Working Humidity		10% ~ 50%

PLAY / PAUSE ▶	Pause	Pause playback, if pressing this button when a file is being played. In order to play again, press this button again.
FF ▶▶	Zoom In	Enlarge a photo.
REW ◀◀	Zoom Out	Reduce a photo.
ANGLE	Rotation	Rotate a photo.
방향키 ▲▼◀▶	Panning	Move the position of photo.
ENTER	Return to Original Photo	Return to original photo.
Brt. CONT	Control luminosity, color depth, brightness	When pressing this button, 3 modes switch. After selecting a mode, change settings with ▲▼ arrow buttons.

✓ **Photo Slide Show**

If you play all files with 'PLAYALL' icon or [PLAY/PAUSE], photo slide shows will be started.

✓ **Music Slide Show**

Make a 'music' folder (in a small letter not a capital letter at root directory) of built-in HDD and save MP3 files at the folder. If the HDD is divided into two or more partitions, make a 'music' folder at first partition.

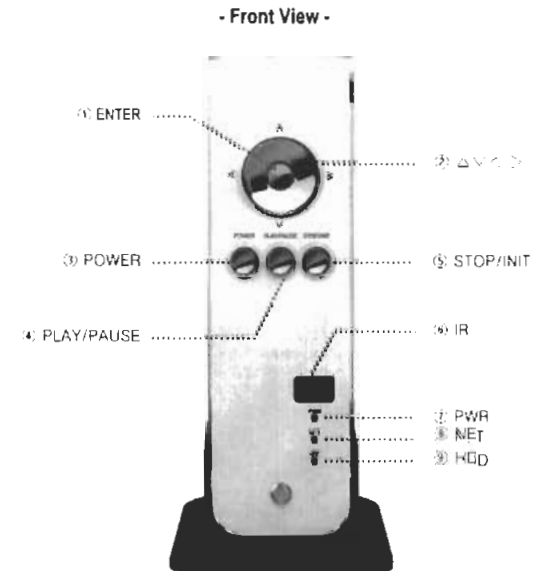
When you play one or all photo files, you can listen mp3 and see photo slide show together.

However, if there is just networking computer (not built-in HDD), you cannot listen mp3. MG-35 just detect mp3 files at built-in HDD's music folder.

✓ **Photo Preview On, Off**

It is possible to enable or disable preview the photo file as a thumbnail image before playing at SETUP screen.

Product Overview



Front View	① ENTER	Select or play a file
	② ▲▼◀▶	Navigation Key, Up, Down, Left, Right
	③ POWER	Power On, Off
	④ PLAY / PAUSE	Play all files from selected file / Pause
	⑤ STOP / INIT	Stop / Return to Mode Selection Screen
	⑥ IR	IR receiving area for remote signals
	⑦ PWR	Power LED
	⑧ NET	Network LED
	⑨ HDD	HDD LED

NEXT ▶▶ I	Playback Next File	Play a next file after a current playback file. If you used [ENTER] for playback, you can not use this function. This is available in playing all files as using [PLAY/PAUSE] button or 'ALLPLAY' icon.
FF ▶▶	Go to 10 Sec. in Forward	Go to 10 sec. in forward and play when a file is being played.
REW ◀◀	Go to 10 Sec. in Backward	Go to 10 sec. in backward and play when a file is being played.
ENTER	Playback a File	Play a file. After finishing playback, return to file selections screen.
PLAY / PAUSE ▶ II	Playback Next All Files	After the file that you select, play next all files continuously. It is same as [PLAY/PAUSE] button.
PLAY / PAUSE ▶ II	Pause	Pause playback, if pressing this button when a file is being played. In order to play again, press this button again.
VOLUME +	Volume Up	Volume up.
VOLUME -	Volume Down	Volume down.
MUTE	Sound Off	Mute the sound. In order to hear sound, press this button again.
SUBTITLE	Hide Mp3 Subtitle	It is possible to show mp3 subtitle which the mp3 file supports subtitle. In that case, this button will hide the subtitle. * mp3 subtitle supported file must be made by iniver caption editor program, not support LDB program.

✓ **How to Play MP3 without TV set. MP3 Quick Play**

Make a 'music' folder (in a small letter not a capital 'letter) at root directory of built-in HDD and save MP3 files at the folder. If the HDD is divided into two or more partitions, make a 'music' folder at first partition.

Turn on MG-35 and just press [PLAY/PAUSE] button. MP3 files at 'music' folder will be played automatically. Additionally, after rebooting MG-35, the last played file will be continued to play.

✓ **How to See MP3 Subtitle**

It is possible to show MP3 subtitle which the MP3 file supports subtitle. MP3 subtitle supported file must be made by 'iniver caption editor' program, not support LDB program.

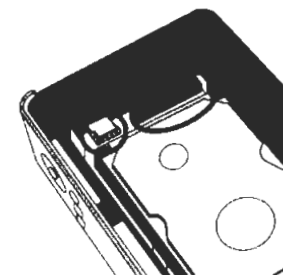
1. Use as External USB HDD

1.1 Insert Hard Disk

- ✓ Use 3.5" IDE Hard Disk for Desktop.
- ✓ Hard Disk should be "Master". However, if the Hard Disk supports "Single" mode, you need to try to set "Single" mode.



① Unscrew 4 spot and open the side cover case with pulling to the arrow direction



② Connect Power and IDE connector to Hard Disk.

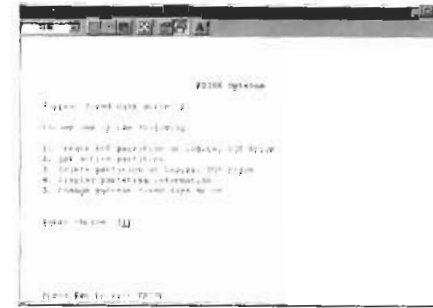


③ Close the side cover case with pulling to the arrow direction.



④ Finish assemble with screwing 4 spot.

REPEAT	Chapter, Title Repeat	Set chapter, title repeat.
A-B REPEAT	A-B repeat	Set the A-B repeat.
TITLE	Go to Title Menu	Move to title menu while playing DVD.
ANGLE	Angle	Apply angle function.
FILE INFO	Show File Information	Show the file information which is being played. In order to hide the information, press this button again.
TIME SEARCH	Jump to Preferable Playback Time	Move to a selected time of a file.
CANCEL	Delete Input Numbers	In time search box, this button deletes all numbers in 0.
Br. CONT	Control luminosity, color depth, brightness	When pressing this button, 3 modes switch. After selecting a mode, change settings with ▲▼ arrow buttons.
PREV ◀◀	Playback Previous Chapter	Play a previous chapter.
NEXT ▶▶	Playback Next Chapter	Play a next chapter.
FF ▶▶▶	Fast Forward	Whenever pressing this button, play speed is changed with 8x, 16x, 32x, 48x in forward.
REW ◀◀◀	Rewind	Whenever pressing this button, play speed is changed with 8x, 16x, 32x, 48x in backward.
ENTER	Playback	Play "Video_ts.ifo" file.
PLAY / PAUSE ▶	Pause	Pause playback, if pressing this button when a file is being played. In order to play again, press this button again.
VOLUME +	Volume Up	Volume up.
VOLUME -	Volume Down	Volume down.
MUTE	Sound Off	Mute the sound. In order to hear sound, press this button again.



8) Select "1. Create Primary DOS Partition" and press [Enter].



9) Wait until finishing verifying the drive integrity.



10) After finishing drive integrity verification, type "Y" at "Do you wish to use the maximum available size for a Primary DOS Partition (Y/N)".



11) Type the capacity or % which you want to use and press [Enter].

12) Drive integrity verification will start again. After finishing that, press [ESC] key when the "Primary DOS Partition created, drive letters changed or added" message displays.



13) Press [ESC] key again. "Shut down Windows before restarting" message will be displayed. Press [ESC] key finally for exiting FDISK.

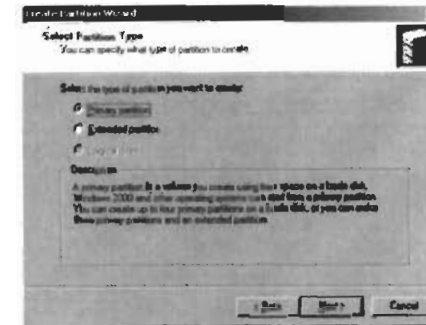


		'ALLPLAY' icon.
NEXT ▶▶ I	Playback Next File	Play a next file after a current playback file. If you used [ENTER] for playback, you can not use this function. This is available in playing all files as using [PLAY/PAUSE] button or 'ALLPLAY' icon.
0 Number button	Screen Reset	If a frame of a video file is broken, green color runs on a overall screen. Press number [o "Zero"] for screen reset.
MENU	Menu Icon Popup	Popup menu will be appeared including 'File Info, Time Search, Subtitle, Scr.Size' functions. In order to hide the popup, press this button again.

5) Click [Next] at the Create Partition Wizard Windows.



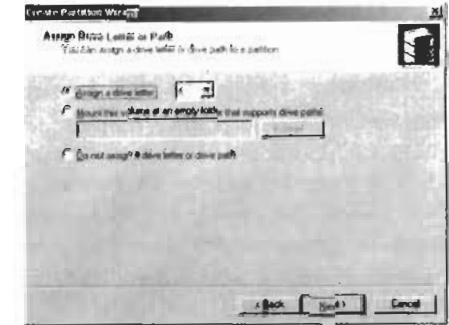
6) Check [Primary Partition] and click [Next].



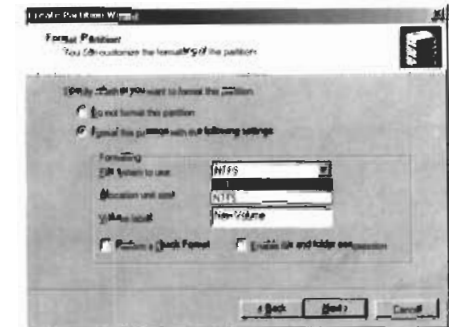
7) Type number that you want to use and click [Next].



8) Assign a drive letter and click [Next].



9) Choose FAT32 or NTFS at File system to use and click [Next].



- ✓ FAT 32 system is available on windows 98SE/ME/2000/XP. but NTFS system is available on windows 2000/XP only.
- ✓ If you choose FAT32 system on Windows 2000/XP. one drive letter's maximum size will be limited to 32GB. If you want to use one drive letter of 32GB more, you have to format on windows 98SE/ME.
- ✓ If you want to create two or more partition with one disk drive, it will be recommended "Primary Partition"

10) After finishing Wizard setup, formatting will be progressed automatically.

3.4 Play Video Files

It is possible to play video files like AVI, MPG, MPEG, DAT, M2V, and VOB.

Select 'Movie' icon in Media Type Selection screen. Video file list will be displayed. Just move to a file and press [ENTER] or [PLAY/PAUSE] button.



Select 'Movie' icon in Media Type Selection screen.



Move to a file and press [ENTER] or [PLAY/PAUSE] button. Press [ENTER] for playing just the file or [PLAY/PAUSE] for playing all files from the selected file.



< Function and Button Descriptions >

Remote Control	Function	Descriptions
AUDIO	Dual Audio	It is possible to switch each audio language when the audio format is dual-audio, for example, including a local language and English.
SUBTITLE	Subtitle Move& Size	It is possible to change subtitle size and location. ◀▶ arrow button changes size and ▼▲ arrow button changes location. After doing, press [ENTER].
	Subtitle Select or Hide	The subtitle name same as video file is displayed on screen automatically. However, it is possible to open the other preferable subtitle files or hide.
	Subtitle Language Select	It is possible to switch each subtitle language when the subtitle is dual language format, for example, including a local language and English. * When selecting 'Discriminating subtitle language', first subtitle language will be displayed.

9) Choose FAT32 or NTFS at File system to use and click [Next].



- ✓ FAT 32 system is available on windows 98SE/ME/2000/XP, but NTFS system is available on windows 2000/XP only.
- ✓ If you choose FAT32 system on Windows 2000/XP, one drive letter's maximum size will be limited to 32GB. If you want to use one drive letter of 32GB more, you have to format on windows 98SE/ME.
- ✓ If you want to create two or more partition with one disk drive, it will be recommended "Primary Partition"

10) After finishing Wizard setup, formatting will be progressed automatically.

2) Use Networking Computer



① [Mode Selection] Move to 'PC-Network' icon and press [ENTER] for playing networking computers' files.



② [Media Type Selection] Select a media type which you want to play and press [ENTER].

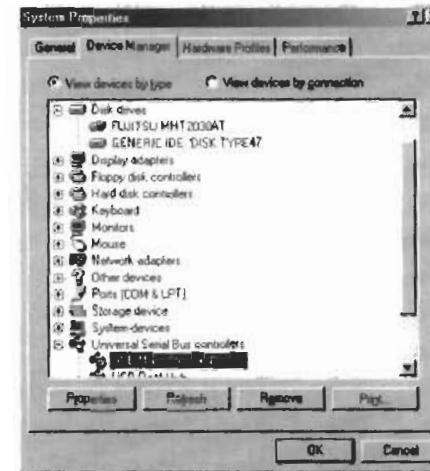
- Movie: Select when playing Video files
- Music: Select when playing Music files
- Photo: Select when playing Photo files
- List: Select when making a play list including video, music, photo files
- Setup: Select when moving to setup screen.



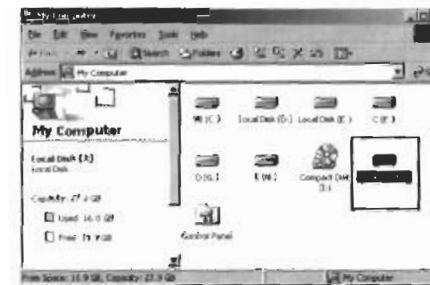
③ [Computer list on network] Computer list on network will be displayed. Move to a computer and press [ENTER].

1.3.2 Windows ME


1) After connecting mg-35 and plug power cable. Windows itself will install driver automatically. And then, check the driver installation at Windows [Start > Settings > Control Panel > (view all Control Panel options) > System > Device Manager > Universal Serial Bus controllers > USB Mass Storage Device]



2) Check 'My Computer' or 'Explorer', there should be a new volume. You can copy any data to this volume.



✓ If a new volume is not be appeared, check HDD format or not, and HDD file system. Windows ME only detect FAT32 file system.

3) After copying data, remove MG-35 with using remove icon  at Windows right-down corner. If you don't follow this procedure, data and MG-35 may have damage.



① Turn on MG-35 and press [SETUP] in Mode Selection screen.

- ② Move to 'Preview' icon and press [ENTER]. Setup box will be displayed under icon menu.
- ③ Move to Photo preview on or off that you want and press [ENTER].
- ④ Finally, press [SETUP] again for saving configurations.

3.2.6 LED Setup

It is possible to turn on or off a backlight LED of arrow button on the front side. When the LED disturbs you in night, turn off the LED.

<Setup Procedure>



① Turn on MG-35 and press [SETUP] in Mode Selection screen.



- ② Move to 'LED' icon and press [ENTER]. Setup box will be displayed under icon menu.
- ③ Move to LED on or off that you want and press [ENTER].
- ④ finally, press [SETUP] again for saving configurations.

1.3.4 Linux

✓ It can be available on Linux 2.4 higher.

[Automatic Mount]

After booting, do log-in.

Connect MG-35 -> Power On MG-35 -> Check the detection with [fdisk] -> make Mount Pointer (ex. mediatest) at Folder Mount(/mnt) -> Edit [/etc/fstab] -> add the following;

```
/dev/sda /mnt/mediatest vfat noauto, user 0 0 (in case of FAT32 HDD)
```

```
/dev/sda /mnt/mediatest ntfs noauto, user 0 0 (in case of NTFS HDD)
```

Do Log-in again.

✓ above example "sda" is assumed that the MG-35 will be detected as "sda" on your system. If not, you have to write the drive name which is detected as "USB Mass Storage", not "sda"

[Manual Mount]

Connect MG-35 -> Power On MG-35 -> Check the detection with [fdisk] -> make Mount Pointer (ex. mediatest) at Folder Mount(/mnt) -> Edit [/etc/fstab] -> add the following;

```
mount -t vfat /dev/sda /mnt/mediatest (in case of FAT32 HDD)
```

```
mount -t ntfs /dev/sda /mnt/mediatest (in case of FAT32 HDD)
```

✓ above example "sda" is assumed that the MG-35 will be detected as "sda" on your system. If not, you have to write the drive name which is detected as "USB Mass Storage", not "sda"

[How to stop using]

Do [unmount] at Device Control.

1.3.5 Mac

✓ It can be available on Mac 9.0 higher.

No need to install the installation driver at Mac OS 9.x version and the MG-35 will be detected automatically. If the MG-35 is detected correctly, an icon is appeared at a monitor.

When removing MG-35 safely, drag the icon to a trash and unplug MG-35.

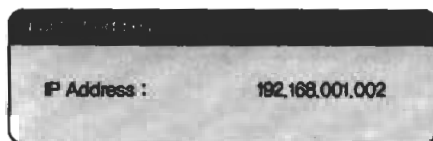
<DHCP Off Setup Procedure>



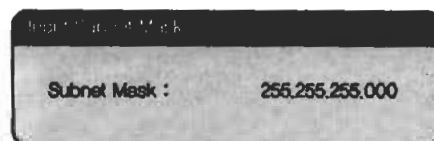
① Turn on MG-35 and press [SETUP] in Mode Selection screen.



② Move to 'Network' icon and press [ENTER]. Setup box will be displayed under icon menu.
③ Move to DHCP Off and press [ENTER].



④ Move to 'IP Addr' and press [ENTER]. IP address input box will be displayed. Write IP address with arrow and number button of remote control. And then, press [ENTER] again.



⑤ Move to 'Subnet' and press [ENTER]. Subnet mask input box will be displayed. Write Subnet mask with arrow and number button of remote control. And then, press [ENTER] again.
⑥ Finally, press [SETUP] again for saving configurations.



✓ Check 'The specific IP address you wrote' When you use 'DHCP off', you can see the IP address in MENU screen after selecting 'PC-Network' icon in Mode Selection screen.

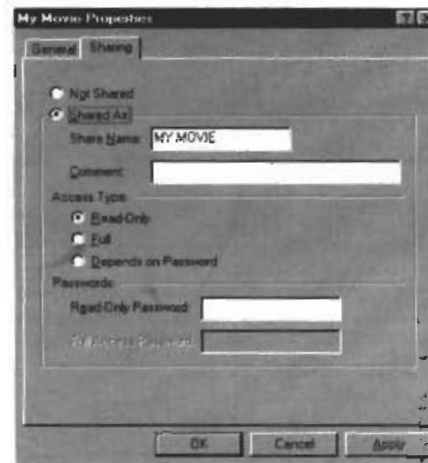
2.2.1 Windows 98SE, ME

1) Select a folder which you want to share. Right-click the folder and click 'sharing' in pop-up menu.



2) Check 'Shared as' and write 'Share Name'. For example, "My Movie"

- ✓ Make sure to write 'share name' within 12 characters in English.
- ✓ Recommend to check 'Read Only' at 'Access Type'
- ✓ Do not write anything at 'Passwords'

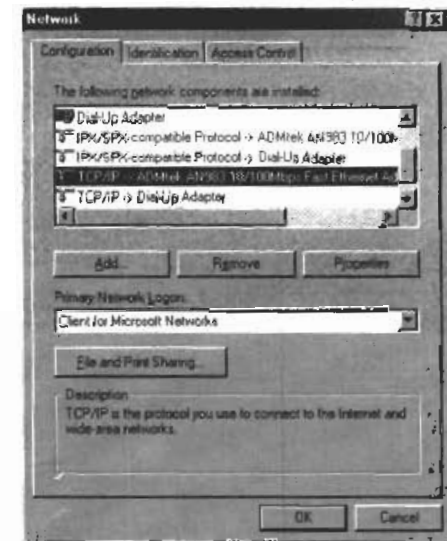


3) After that, the shared folder will be displayed as following picture.



4) Move to [Control panel > Network], and double click 'TCP/IP->LAN card' that you want to use on your computer.

✓ In order to see LAN Card name, move to [Control Panel>System>Device Manager>Network adaptors]



5) Check 'Specify an IP address', and write 'IP address' & 'Subnet mask' that you want to use.

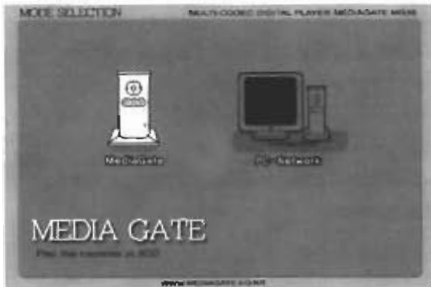
For example,
IP address: 192.168.1.3
Subnet mask: 255.255.255.0

3.2.2 Audio Setup

This is guide for setting audio output of MG-35. You can use Stereo or Digital 5.1 ch..

- ✓ Analogue/DCPM: Select when you connect the supplied aud/o cables (Red / White) to TV or Audio set directly.
- ✓ Encoded Digital: Select when you want to listen through 5.1Ch / DTS Dolby by connecting receiver (or amplifier) with Optical or Coaxial cable.

<Setup Procedure>



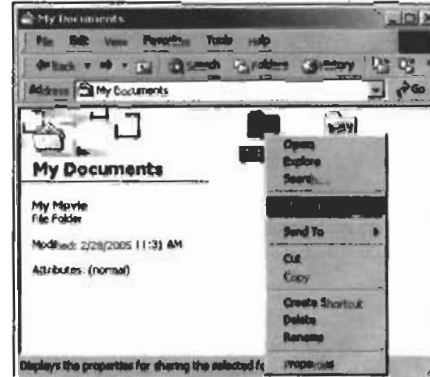
(1) Turn on MG-35 and press [SETUP] in Mode Selection screen.



- (2) Move to 'Audio' icon and press [ENTER]. Setup box will be displayed under icon menu.
- (3) Move to Audio Output Mode that you want and press [ENTER].
- (4) Finally, press [SETUP] again for saving configurations.

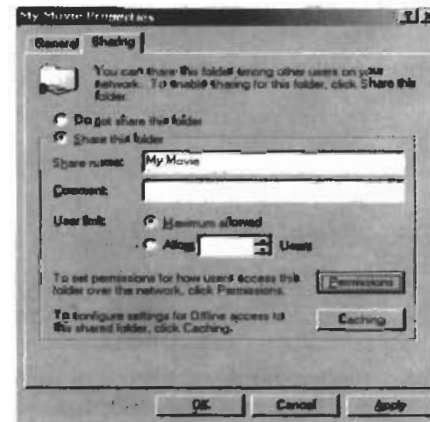
2.2.2 Windows 2000

1) Select a folder which you want to share. Right-click the folder and click 'Sharing' in pop menu.



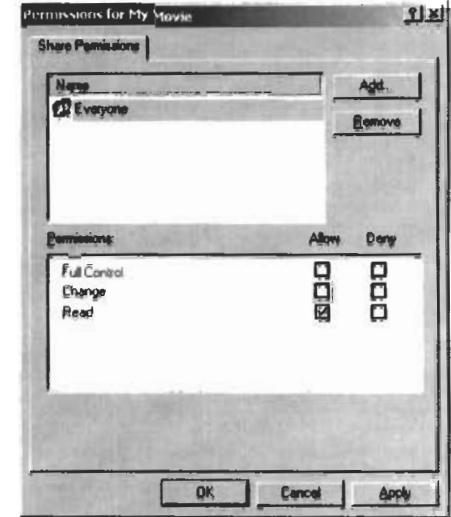
2) Check 'Share this folder' and write 'share name'. For example, "My Movie"

✓ Make sure to write 'share name' within 12 characters in English.



3) Click 'Permissions' and check whether "Everyone" account is or not. If not, add "Everyone" account.

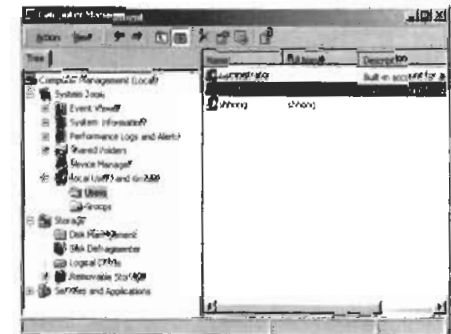
✓ Recommend only to use 'Read>Allow' at Permissions.



4) After that, the shared folder will be displayed as following picture.



5) Move to [Settings>Control Panel>Administrative Tools>Computer management>Local Users and Groups>Users], and double click 'Guest'.



3.2 Basic Setup

3.2.1 Video Setup

This is guide for setting video output of MG-35. You have to setup MG-35's video output mode same as TV set's video input mode.

✓When you can not see normal screen after connecting video cable, check followings.

1. *TV * – Switch to Video Input Mode: Turn on TV, and switch to video input mode same as video connection. See TV user manual.
2. *MG-35* – Switch to Video Output Mode: Press [VIDEO] button repeatedly. Whenever press [VIDEO], video output signal is changed.
3. After you see normal screen, you have to save video configurations of MG-35.

TV Video Input Mode	MG-35 Video Output Mode	Connection Jack of TV, MG-35	Video Cable Type
Normal Video	TV Out: NTSC C/S-Video (HD Component OFF)	CVBS or Composite Jack (Generally Yellow Jack)	Yellow RCA Cable (Supplied)
	TV Out: PAL C/S-Video (HD Component OFF)		
S-Video	TV Out: NTSC C/S-Video (HD Component OFF)	S-Video Jack	S-Video Cable * Black rounded
	TV Out: PAL C/S-Video (HD Component OFF)		
Component 480i	TV Out: NTSC C/YpPr (HD Component OFF)	Component 3 Jack * Y(Green), Pb(Blue), Pr(Red)	Component Cable * Y(Green), Pb(Blue), Pr(Red)
	TV Out: PAL C/YpPr (HD Component OFF)		
Component 480p	HD Component Out On 480p		
Component 720p	HD Component Out On 720p		
Component 1080i	HD Component Out On 1080i		

✓NTSC, PAL : Standard of TV Output. Select a proper one for using in your country.

10) Set the network configurations of MG-35.

✓You have to connect MG-35 to TV set for this setup.
See "3.1.1 Connect Video Cable".

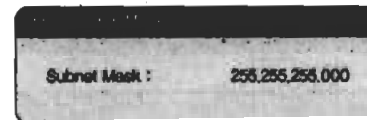
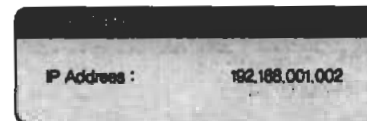
Press [SETUP] of remote control for moving to setup screen. On that screen, select 'DHCP off' and write IP address & Subnet mask.

For example,

IP Address: 192.168.1.2

Subnet mask: 255.255.255.0

After writing, press [SETUP] again for saving configurations.



✓If you have already been provided dynamic IP address from DHCP Server or IP Router on your local area network, you don't need to write static IP address absolutely. Use 'DHCP on' or write IP address & Subnet mask that DHCP Server or IP Router provide.

✓Check 'IP address obtained automatically'
When you use 'DHCP On', you can see the IP address in MENU screen after selecting 'PC-Network' icon in Mode Selection screen.



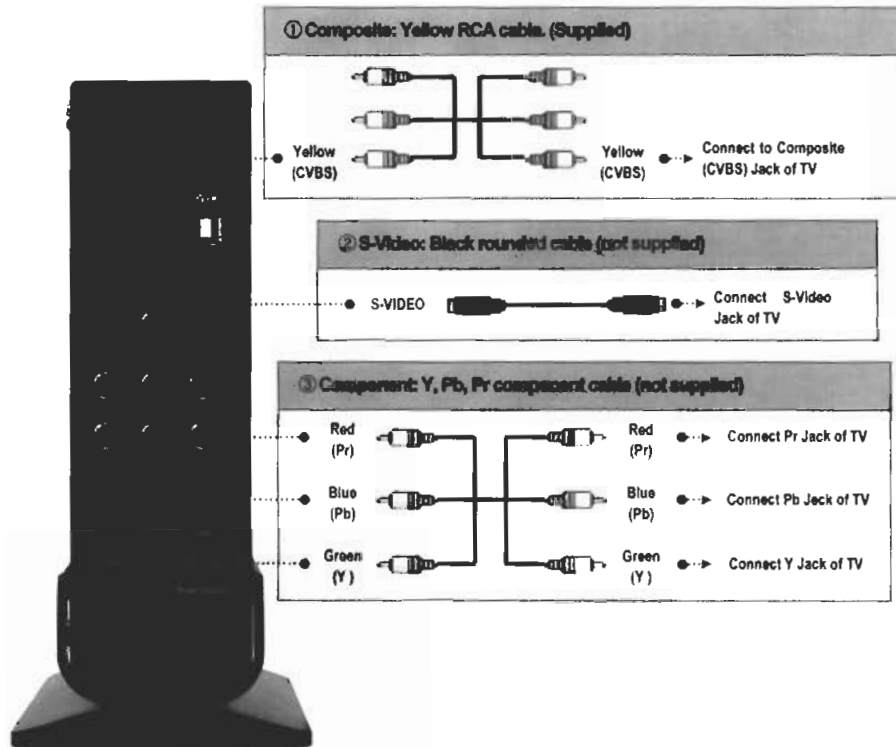
<MG-35's IP Address>

3. Use as Multimedia Player

3.1 Connect to External AV Device

3.1.1 Connect Video Cable

MG-35 supports 3 type of video output: "Composite, S-video, Component". Use video connection that your TV supports. Normally, TV supports composite video connection, and this package supplies composite video cable.



- ✓ When you can not see normal screen after connecting video cable, check followings.
- 1. *TV* – Switch to Video Input Mode: Turn on TV, and switch to video input mode same as video connection. See TV user manual.
- 2. *MG-35* – Switch to Video Output Mode: Press [VIDEO] button repeatedly. Whenever press [VIDEO], video output signal is changed.
- 3. After you see normal screen, you have to save video configurations of MG-35. See "3.2.1 Video Setup".

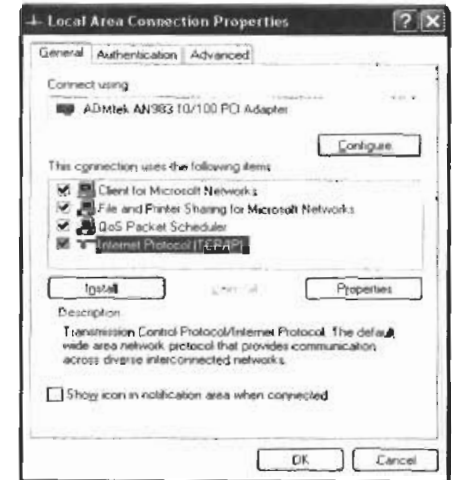


6) Move to [Control Panel>Network connections], and select 'Local area connections' properties by right click of mouse.

- ✓ If you can't find 'Administrative Tools' at Control Panel, click "Switch to classic view" in left-up corner on screen.
- ✓ If you see two or more 'Local area connections', select one that you will use for connecting to MG-35.



7) Double click 'Internet Protocol(TCP/IP)' that you want to use on your computer.



8) Check 'Use the following IP address', and write 'IP address' & 'Subnet mask' that you want to use.

For example,
 IP address: 192.168.1.3
 Subnet mask: 255.255.255.0

