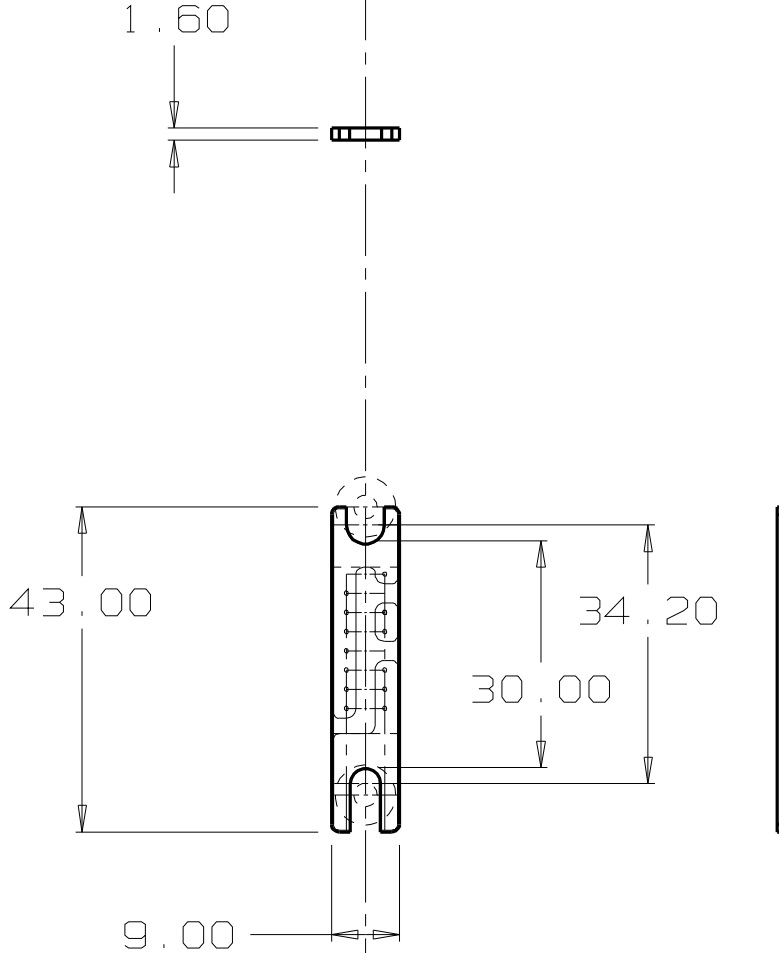


CASA Part Number Composition

Example = 44A-xxxMA-xxV-RLED-xxx
 44A = fuse series
 xxxMA = continuous rated current in milliamperes
 xxV = nominal circuit voltage (for trip-LED option)
 RLED = optional red LED trip indicator
 xxx = custom suffix if/as appropriate



NOTES - The PCB component may be supplied bare or with a pre-fitted industry standard fuse element as specified/choosen from available stocks.

The fusing charistic will be according to the OEM fuse maker's specifications. Please match your application requirements to the fuse makers published specifications.

The LED trip-signal is only visible when the fuse element blows and there is 'normal' voltage supply to the circuit. A small current flow is required to illuminate the LED so this tell-tale is only active when some suitable current flows.

| | |
|----------------|--|
| MATERIAL | Fibre-Glass PCB |
| ALLOY | G10-DS-1oz |
| EST. AREA | TBA mm |
| EST. WEIGHT | TBA kg/m |
| EST. PERIPHERY | EXT: 354 mm |
| | TOT: 354 mm |
| TOLERANCE | 0.00mm ±0.1mm 00.0mm ±0.25mm 0000mm ±0.5mm 0-600mm ±0.1mm > 600mm ±0.5mm |
| | BS1474:1987 APPLIES UNLESS OTHERWISE SPECIFIED |
| JOB No. | 3210 |

| | | | | | |
|--|---------------|-----------------------------------|------------|-----------------------|---|
| | CUSTOMER : | CASA Modular Systems | SIZE | DRAWING Reference No. | ISSUE |
| | DESCRIPTION : | Series 44A GrassHopper Fuse Blank | A4 | 44A-FUSE | A |
| P.O. BOX 38-828, WELLINGTON, NEW ZEALAND TELEPHONE : (+64-4) 9393 777 eMail : sales@casa.co.nz | DRAWN : | DATE : | APPROVED : | DWG. SCALE : | © COPYRIGHT : CASA Modular Systems ALL RIGHTS RESERVED |
| | AWD | 13/08/19 | ? | 1:1 | |