



ATLAS SOUND

COMMUNICATIONS PRODUCTS

HPC-70 SERIES SIREN LOUDSPEAKERS

SPECIFICATIONS:

POWER: 58 WATTS, RMS
(Conservative rating, for electronic siren use, based on obtaining maximum reliability and performance under normal environmental and operating conditions)
100 WATTS, EQUALIZED POWER
(Conservative rating, for voice reproduction use, based on input range limited to frequencies above horn cutoff)

IMPEDANCE: 11 OHMS, NOMINAL

FREQUENCY RANGE: 375-8000 Hz (For electronic siren and emergency signalling application)

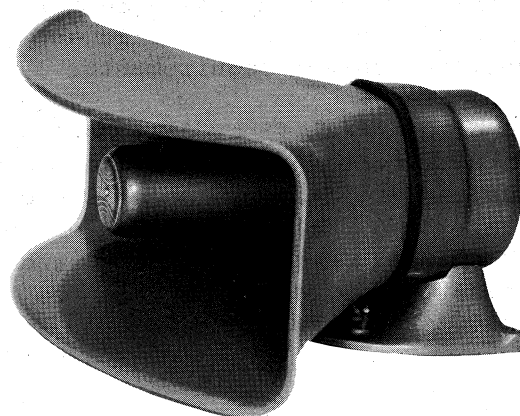
DISPERSION: 120° x 60°

SOUND LEVEL: 128 db, 4 ft. on axis
130 db, 1 meter on axis
(measured at 1600 Hz, rated power, Ref: .0002 dynes/cm²)

MOUNTING: HEAVY DUTY CAST BRACKET INCLUDING SEALING GASKET

TERMINATION: 3" (7.5 cm), 18 GAUGE, COLOR CODED LEADS
14-3/8" W x 6-3/8" H x 11-3/8" D
(36.5 cm x 16.2 cm x 28.9 cm)

WEIGHT: 10 LBS (4.53 Kg)



MODELS

HPC-70G: GRAY EPOXY FINISH
HPC-70W: WHITE EPOXY FINISH

GENERAL DESCRIPTION

ATLAS SOUND HPC-70 Series are double re-entrant type, low profile, wide angle directional loudspeakers designed specifically for electronic siren, public address, and other high intelligibility signalling applications.

By virtue of their heavy duty construction these loudspeaker are equally suitable for mobile or stationary installations, and land, marine or airborne use. HPC-70 Series loudspeakers meet performance criteria established by Article 8, Title 13 of the California Administrative Code and have attained approval with systems of many electronic siren manufacturers.

Whether roof, lightbar or fender-mount, each HPC-70 Series loudspeaker is styled to reduce wind resistance and will enhance the appearance of ambulance, fire, law enforcement, utility and other vehicles. The non-resonant molded fiberglass horn optimizes the wide sound dispersion at any power level and in an exponential 120° x 60° pattern.

To protect the loudspeaker against external physical abuse, each HPC-70 Series unit is factory assembled and supplied with color-coded connecting wires built into the heavy duty cast bracket base.

ATLAS SOUND DIVISION OF AMERICAN TRADING AND PRODUCTION CORPORATION
10 POMEROY ROAD, PARSIPPANY, NEW JERSEY 07054
TELEPHONE 201 887-7800



ATLAS SOUND

COMMUNICATIONS PRODUCTS

GENERAL DESCRIPTION

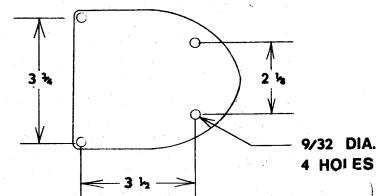
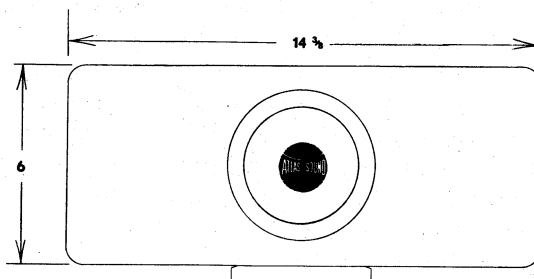
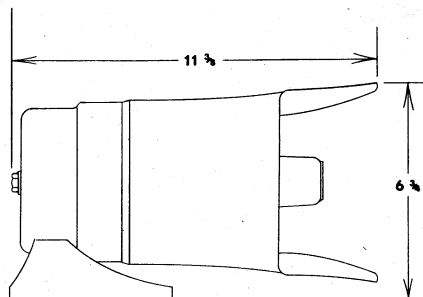
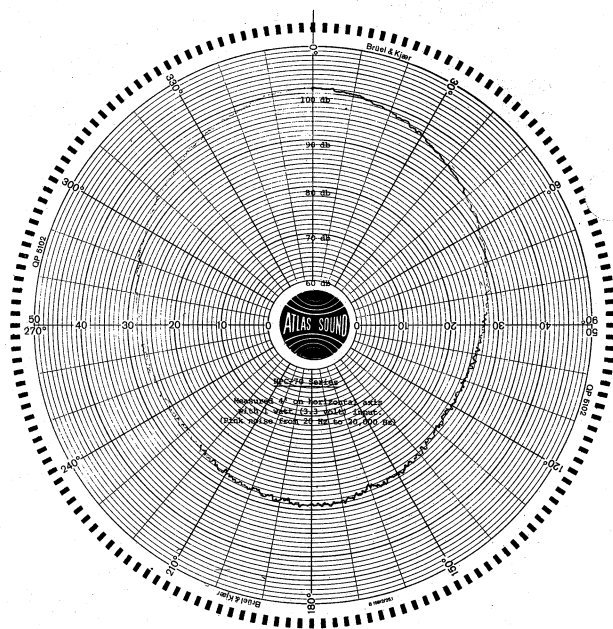
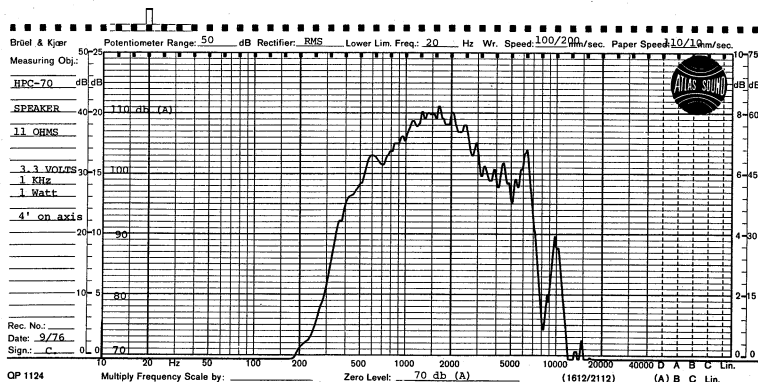
ATLAS SOUND offers a selection of wide angle weatherproof loudspeakers with acoustic and performance standards that assure continuous high power handling capability, superior intelligibility, and unparalleled power conversion efficiency for lowest amplifier-output requirements.

The exponential fiberglass bell and protective heavy gauge aluminum cover house the field-proven Atlas Sound Model SD-70 (M6) compression driver and provide complete weather and corrosion protection for all the loudspeaker components.

The compression driver is easily removable for service and features a non-fatiguing, self-aligning, field-replaceable diaphragm assembly (D-20LB).

ATLAS SOUND HPC-70 Series loudspeakers are recommended for medium power systems. They are conservatively rated at 58 watts RMS in electronic siren use, and will provide up to 100 watts equalized power for public address voice functions.

Finish is baked epoxy, and available in gray or white color.



ATLAS SOUND DIVISION OF AMERICAN TRADING AND PRODUCTION CORPORATION
 10 POMEROY ROAD, PARSIPPANY, NEW JERSEY 07054
 TELEPHONE: 201 887-7800